



**Silverwoods**  
of Clitheroe

*Antiques Auctioneers of distinction and quality*

**Auction sale of  
Antiques, Collectables, and Quality  
Furniture & Effects  
On  
Thursday 30<sup>th</sup> July 2009  
at 10.00am**

at the Silverwoods Auction Room  
Clitheroe Auction Mart  
Lincoln Way  
Clitheroe, Lancashire, BB7 1QD

Viewing Times

Tuesday 28th 4.00pm – 6.30pm

Wednesday 29th 10am – 2pm

Thursday 30th from 8.30am to start of sale

Or by appointment

Sale Starts at 10am

Tel:- 01200 423322      Fax:- 01200 429263

Buyers Premium – 14.38% (including VAT)

Entries are invited on every Monday between  
9am – 12 noon

Other times available by appointment

Please contact Wilf Mould

---oo0oo---

Lot No	Description
--------	-------------

### Ceramics & Collectables

1	56 piece Royal Albert Tree of Kashmir dinner set £50-80
2	Assorted Masons, Wedgwood, Fenton, Royal Albert plates etc £15-20
3	10" relief moulded vase, two lustre Toby jugs, and 4 others, pair of Japanese vases, 6 pieces of blue and white plates and jug £40-50
4	Selection of small items of Limoges pottery £40-45
5	8 items of Elwenny Studio pottery £20-40
6	8 items of Elwenny Studio pottery £20-40
7	8 items of Elwenny Studio pottery £20-40
8	8 items of Elwenny Studio pottery £20-40
9	8 items of Elwenny Studio pottery £20-40
10	8 items of Elwenny Studio pottery £20-40
11	8 items of Elwenny Studio pottery £20-40
12	7 items of Elwenny Studio pottery £20-40
13	Royal Osborne 21 piece tea set and Royal Albert 'Enchantment' 30 piece tea set £10-15
14	Paragon 'Morning Rose' 27piece tea set £15-20
15	8 items of Ringtons blue and white breakfast ware £20-30
16	6 items of mixed 19thC pottery including 2 French vases, cups and saucers etc £20-30
17	Selection of 12 antique and other plates, 19thC and later including 2 x Mow Cop Centenary plates 1907 £25-35
18	Mixed lot of antique tableware including Real Olde Willow £15-25
19	Selection of 20 items of mixed antique pottery £20-30
20	21 piece tea set £10-15
21	Tray of blue and white pottery including a lemon squeeze and shaving mug - 17 pieces £15-20
22	Arts and Crafts applied decorative vase. Marked E.S.M.S.L £20-30
22A	Pair of Poole 'Sienna' plates £30-40
23	4 items of old blue and white and Royal Doulton 'Gleaners' jug £20-30
24	2 x Chameleon ware vases and Myott jug £20-30
25	3 miscellaneous items including Arthur Woods £15-20
26	Royal Doulton 'Melanie' and 1 other, and 2 posy ornaments, 2 small 'Irish Dresden' figures £20-30
27	4 x Jackfield cow creamers £30-40
28	Royal Albert 'Old Country Roses' tea set, 40 pieces £60-80
29	2 pottery dogs, 2 novelty dogs, single Staffordshire pottery dog, Staffordshire horse and rider £20-25
30	9 items of crested ware £20-25
31	4 Staffordshire flatback cottages £30-40
32	Large handpainted pottery vase £25-30
33	4 items of decorative pottery, including Carlton, Malling, Old Court, Phoenix and Royal Venton £30-40
34	3 pieces of Noritake £15-25
35	Rabbit theme musical ornaments £10-15

Silverwoods 30 July 2009

Lot No	Description
36	Silver plated 3 piece cruet set, pottery cat money bank and pottery cottage £20-30
36A	2 x 19thC Staffordshire flatbacks and teapot on cylindrical stand £20-25
37	7 items of porcelain and china including Susie Cooper, Aynsley, Royal Albert, Wedgwood etc £20-30
38	4 Guinness bird figures £15-20
39	Goebel Labrador plus 7 animal figures including cats, dogs and mice £15-20
40	3 x Hummel figurines £30-40
41	3 Hummel figures £30-40
42	2 Hummel figures - 'Meditation' and 'Girl Behind Fence' £25-35
43	11 Thelwell collectors plates £40-50
44	Arthur Wood, Thelwell pony tea service £10-15
45	Beswick - 5 Thelwell pottery models £30-50
46	9 piece pottery dressing table set decorated with sunflowers
47	Royal Albert 'Old County Roses' 25 piece tea set £40-60
48	Early 19thC 19 piece china tea service and Edwardian 26 piece tea service £25-35
49	4 items of Tunstall pottery, 2 bowls, jug and vase - 'Viola', and 'Tulip Time' £30-40
50	Tunstall pottery, 6 items of jugs and vases £30-40
51	Tunstall pottery - 'Autumn', 3 vases and 2 jugs £30-40
52	Tunstall pottery - 'Autumn', 4 jugs and 2 vases £30-40

---




53 Tunstall pottery, 7 items  
£40-50



---

54	Tunstall pottery - 'Viola', 5 items - 3 vases and 2 jugs £40-50
55	Border Fine Arts BO888, 'The Champion Shire' £100-150
56	Staffordshire type dog Toby jug £15-20
57	Country Artists - Barn Owl, boxed £10-15
58	Caverswall Caernarvon 5 piece dinner service for one £30-40
59	Tunstall pottery - 5 various designs £25-35
60	2 Cantonese plates £30-40
61	Karl Ens, porcelain model of a young girl with chicken £25-35
62	Unter Weiss Bach, pair of Dresden style figures £30-40
63	Noritake dressing table set, 5 piece £35-45
64	Shelley vase and cake stand and Wade Heath jug £20-30
65	Victorian oil on porcelain by L Stansfield, 1888, plus Royal Worcester 'Cyclamen' plaque £20-30

Silverwoods 30 July 2009

Lot No	Description	
66	Royal Doulton 'Desert Orchid' DA134. Limited Edition	£100-150
67	Royal Doulton 'Desert Orchid'	£30-40
68	Royal Doulton 842480 'Her Ladyship'	£40-50
<hr/>		
69	Royal Doulton HN2017 'Silks and Ribbons'	£40-50
		
<hr/>		
70	Royal Doulton HN1843 'Biddy Penny Farthing' A/F	£25-30
71	Royal Doulton HN1954 'The Balloon Man'	£40-50
72	Royal Doulton HN1798 'Lily'	£20-30
73	Carlton triangular tomato bowl plus similar Beswick cress strainer and dish	£25-30
74	2 Staffordshire flatbacks	£30-40
<hr/>		
75	Goebel Flamingos figure	£100-120
		
<hr/>		
76	Royal Dux cockatoo, 16" high	£60-80
		

Silverwoods 30 July 2009

Lot No	Description
77	Reproduction Staffordshire bear baiting jug £50-60
78	Lorna Bailey football mascot £20-30
79	Lladro polar bear £20-30
80	Lladro polar bear £20-30
81	Good assortment of mixed 19thC and other small items of pottery £40-50
82	5 items of ceramics including Burleigh, Tony Weller, Royal Crown Derby, Masons, Burleigh vase and cottage butter dish £30-40
83	Royal Worcester blush ivory basket £100-130
84	Royal Worcester 1901 cream milk jug £25-30
85	Studio pottery - clay dough models of street vendors - 4 items £30-40
86	Studio pottery - clay dough models of street vendors - 3 items, and a seated dog £30-40

---

- 87 Studio pottery - clay dough models of street vendors - 4 items £30-40



- 
- 88 Bisque bathing belle on shell, pin doll, dancing lady £15-20  
89 Fish made from abalone shell and Lladro Goose 1940's £20-30  
90 Winstanley - 5 kittens £50-80  
91 Winstanley - 3 seated cats £50-80  
92 Pair of brown and white Staffordshire pottery cats seated, 23cms £45-60  
93 Pair of blue floral Staffordshire pottery cats seated, 21cms £45-60  
94 Pair of floral decorated Staffordshire pottery cats seated, 27cms £45-60  
95 Pair of brown Staffordshire pottery cats reclining £45-60
- 

- 96 Pair of small white Staffordshire pottery cats decorated with blue roses, seated £45-60



- 
- 97 Pair of black and white spotted Staffordshire pottery cats seated, 'Thomas' and 'Selina', 27cms £45-60

Lot No	Description
--------	-------------

- |    |   |
|----|---|
| 98 | Pair of black and white Staffordshire pottery cats seated, 'Samuel' and 'Hannah', 27cms<br>£45-60 |
|----|---|



- |     |   |
|-----|---|
| 99  | Pair of floral decorated Staffordshire pottery cats reclining, one with broken tail<br>£45-60     |
| 100 | Pair of small brown and white Staffordshire pottery cats seated with kittens,<br>17cms £45-60     |
| 101 | Pair of brown pottery cats reclining £45-60   |
| 102 | Pair of white and blue floral Staffordshire pottery cats seated, 26cms £45-60                     |
| 103 | Pair of black and white Staffordshire pottery cats £45-60   |
| 104 | Pair of gilt lustre decorated Staffordshire pottery cats seated, 20cms £45-60                     |
| 105 | Beswick - Hereford Cow £25-35   |
| 106 | Beswick - Tan Pit Bull Terrier £25-30   |
| 107 | Beswick - black Pit Bull Terrier £25-30   |
| 108 | Beswick - Collie dogs £25-30  |
| 109 | Beswick - Collie dog - tricolour £25-30   |
| 110 | Beswick - Rotweiller dog £25-30   |
| 111 | Beswick - Fox and 3 hounds £25-35   |
| 112 | Beswick - Beatrix Potter 'Hunca Munca' and 'Lady Mouse' £20-30                                    |
| 113 | Beswick - Beatrix Pottery 'Ribby' and 'Cecily Parsley' £20-30                                     |
| 114 | Pair of Harley Jones Wilton ware lustre decorated vases, 16cms, 1536/5375<br>£50-70               |
| 115 | Moorcroft, 25cms dia Poppy plate on blue ground, 1996 £50-60                                      |
| 116 | Moorcroft, 6.5cms, onion shape vase, 1999 £25-35  |
| 117 | Moorcroft, 16.5cms, Irises baluster shape vase £25-35   |
| 118 | Moorcroft, 8cms, onion shape Poppies vase £25-35  |
| 119 | Moorcroft, 10cms, onion shape Poppies vase £40-50   |
| 120 | Lise B Moorcroft, 8cms, Wisteria vase, and Lise B Moorcroft, 13cm, Wisteria<br>vase £30-50        |
| 121 | Lise B Moorcroft, 18cms, square Poppy plate, Lisa B Moorcroft blue Poppy<br>plate £25-35          |
| 122 | Lise B Moorcroft, 15cms, Viola vase, 335 of 750, and Lise B Moorcroft, 8cms,<br>Viola vase £20-30 |
| 123 | Lise B Moorcroft, 16cms, Poppy vase, and Lise B Moorcroft, 16cm, blue Poppy<br>vase £30-50        |
| 124 | Lise B Moorcroft, pair of 24cms Poppy baluster vases £35-45                                       |

Lot No Description

125 Lise B Moorcroft, pair of 24cms blue  
Poppy baluster shape vases  
£40-50



- 
- 126 Lise B Moorcroft, 13cms x 7cms, blue ground vases, plus similar 8cms pair  
£40-50
- 127 Lise B Moorcroft, 4 x 7cms, blue Poppy vases £25-35
- 128 Lise B Moorcroft, 6cms, onion shaped Poppy vase and a pair of matching 7cms  
vases £25-35
- 129 Lise B Moorcroft, 2 pairs and single 15cms dia dishes £40-50
- 130 Lise B Moorcroft, 18cms dahlia vase, 148 of 500 £20-25
- 131 Lise B Moorcroft, 24cms and 17cms yellow Poppy vases £35-40
- 132 Lise B Moorcroft, pair of 8cms and 10cms blue daisy vases £25-35
- 133 Lise B Moorcroft, 4 small black ground vases, 7cms and 8cms £30-40
- 134 Lise B Moorcroft, 4 small black ground vases, 7cms and 8cms £30-40
- 135 Lise B Moorcroft, pair of 8cms blue Poppy vases £20-30

---

136 Lise B Moorcroft, 4 small trial pieces  
£30-40



- 
- 137 Lise B Moorcroft, pair of 13cms Orchid vases £25-35
- 138 Lise B Moorcroft, 3 x 7cms dia lidded pots £30-40
- 139 Lise B Moorcroft, 4 small black ground vases, 7cms and 8cms £25-35
- 140 Lise B Moorcroft, 31cms, Limited Edition, Hibiscus plate - black ground, 12 of  
50 £40-50
- 141 Lise B Moorcroft, 31cms, Limited Edition, Hibiscus plate, blue ground,  
11 of 50 £40-50
- 142 Japanese Satsuma vase, 25cms, on hardwood stand £40-60

Lot No Description

143 Japanese Imari vase, 31cm  
£100-150



Glassware

144 6 decanters £25-30  
145 3 x 19thC air twist wine glasses £80-120  
146 Blue glass mushroom with silver dragonfly on top by J Ditchfield, signed  
£15-20

147 Decorative cased glass vase  
£20-25



148 Studio glass, coloured globe vase and Mdina horse paperweight £15-20  
149 Set of 6 Waterford Crystal Hock glasses £60-80  
150 3 cut glass Crystal decanters £20-30  
151 Glass stick and rolling pin £20-30  
152 WMF drinking vessel, WMF basket £20-30  
153 3 pieces of Murano glass £25-35  
154 Selection of cut glass lustre droppers and chandelier crystals and cut glass blue vase £30-40  
155 Set of 6 crystal wine glasses and 6 pieces of Art Deco coloured glass £15-20  
156 Pair of blue glass table lustres with droppers £20-30  
157 8 Victorian custard cups £40-50  
158 Selection of 15 items of glass £25-35  
159 Selection of mixed glass ware including 3 x 19thC rummers and wine glasses £40-50  
160 2 codd bottles and 3 items of glass £15-20  
161 6 items of coloured glass including paperweights and vases £12-15

## Silverwoods 30 July 2009

Lot No	Description
162	Art Deco chrome and glass fruit bowl and Carnival glass, 20cm fruit bowl with impressed lions £10-15
163	Selection of mixed glass tableware including Webb Corbett, coloured glass vase and 2 blue lined vases £15-20
164	16 piece crystal glass including Waterford clock, 2 decanters, dressing table set £30-40

### Interesting Collectables, Cutlery & Costume Jewellery

165	German lidded Stein, 4 pewter tankards, silver plated teapot, milk jug and sugar bowl £15-20
166	Possibly silver - no marks, 12" candlestick £30-60
167	Silver plated 4 piece tea service with 2 handled tray £30-40
168	2 bottles of gin - Gordons, White Satin, 2 bottles of sherry - Primero, Cockburns Port, 1 bottle of Malibu, 7 bottles of liqueurs £20-30
169	4 bottles of whisky - Grants and Johnny Walker, full sized, Glayva and Grants, half sized £30-40
170	3 bottles of brandy - Three Barrels, Napoleon and Vecchia Romagna £20-30
171	5 x 1950's bottles of wine and Champagne £15-25
172	4 Italian figurines and Japanese ivory figure and carved scent bottle £10-20
173	Selection of mixed ivory items including netsuker etc, plus half body doll £25-35
174	2 bronze high relief vases £40-60
175	Mixed lot of coins £15-20
175A	Collection of stamps, badges and matches, bygone gasfire igniter and box of office equipment £15-20
176	A Nazi armband and silver plated eagle £20-30
177	Collection of early to late 20thC ephemera including a selection of pre-war Nazi postcards relating to Adolf Hitler, First Day covers, European postcards etc £30-60
178	Collection of 25 sweet heart cards - WWII plus various early 20thC post cards £30-50
179	Box of assorted cutlery including silver banded dessert service £25-35
180	40 pieces of silver cutlery £80-120
181	Silver handled 23 piece set of fish eaters £20-30
182	Set of Kings pattern cutlery £30-40
183	Tin of costume jewellery £20-30
185	Small lot of costume jewellery and buttons £15-20
186	Box of costume jewellery £20-30
186A	Tray of costume jewellery £30-40
187	Costume jewellery and watches £30-40
188	Tin of mixed costume jewellery £10-15
189	Red tray of costume jewellery £20-30
190	Box of costume jewellery £20-30
191	Box of jewellery, some silver items £15-20
192	Enamel and glass necklace plus brooch £15-20

Lot No Description

- 193 Collection of golf balls including 12 Dunlop Warwick 6, 12 Slazenger Plus, 3 Dunlop 65, and 1 Slazenger B51  
£80-120



- 194 Art Nouveau pewter framed oval mirror £15-25  
195 Small gilt framed oil painting on copper, in oval frame £25-35  
196 Persian small framed painting on ivory of a battle scene £40-60

**Silver, Jewellery & Watches**

- 197 3 silver framed photo frames, plus 2 pairs of silver sugar nips £20-30  
198 6 items of silver including 2 pairs of small candlesticks, vase and dish £40-60  
199 Silver photo frame with original backing H M Birmingham 1926 £25-30

- 200 Silver cake basket with swing handle.  
Sheffield 1915, 22oz  
£120-150



- 201 Silver plated openwork sugar basket £30-50  
202 Silver backed hand mirror and clothes brush - H M Birmingham 1906 - 1907  
£10-20  
203 Pair of silver vases, Walker & Hall, Birmingham 1921 £50-80  
204 Graduated trio of silver vases, Birmingham 1909 with chequerboard openwork  
decoration £80-120  
205 Silver pedestal dish, H M Birmingham 1974 £15-20  
206 Cased silver presentation spoon 1912 £10-15  
207 Cased silver cake knife decorated with lily of the valley, plus plated presentation  
spoon. Sheffield 1923 £20-25  
208 Electronic jewellery scale £10-15  
209 Plated pickle fork, spoon and pair of silver ice tongs, 1935 £15-20  
210 Cased set of silver coffee bean spoons. Birmingham 1931 £20-25  
211 Elkington silver plated slice and fork, 1867 £30-40  
212 Ornate openwork match box holder, possibly Indian silver £15-20

Silverwoods 30 July 2009

Lot No	Description	
213	Small silver vesta case. Birmingham 1901	£30-40
214	Pair of shell shape silver salts. Chester 1895	£35-50
<hr/>		
215	Silver vesta case with chased decoration. Birmingham 1894. 6 1/2 cms x 4 1/2 cms	£40-45
		
<hr/>		
216	Silver caddy spoon 1916	£15-20
217	Silver Giorgio Armani ring in box	£10-15
218	Masonic swivel ring 9ct gold	£25-35
219	Gentleman's gold and diamond ring	£25-35
220	Smiths chronometer	£10-15
221	Gold plate Waltham pocket watch A.F	£10-15
222	Omega seamaster gentleman's wrist watch, circa 1950	£30-50
223	Meerschaum pipe and box - hunting scene	£20-30
224	Silver charm bracelet	£25-35
225	3 gold rings	£20-30
226	9ct gold chain bracelet, 23cms, 28.6gms	£150-200
227	Gold nugget, 9ct, 12.1gms	£70-90
<hr/>		
228	1965 gold Sovereign in pendant mount	£110-130
		
<hr/>		
229	18ct ruby and gold dress ring, 9.5gms gross	£60-80
230	15ct diamond and sapphire ring	£20-30
231	White gold eternity ring set with approximately 1.28ct diamonds	£600-700
232	White gold, diamond and sapphire pendant, the diamonds forming a garland around a tear drop shape sapphire, linked by a diamond and sapphire dropper. All fixed to a white gold and diamond neck chain	£400-500
233	Gold stick pin with jet and pearl set head	£30-40

## Silverwoods 30 July 2009

Lot No	Description
234	White gold and diamond encrusted cross on white gold neck chain with single stone mounted diamond linking the cross to the chain £350-400
235	Pair of facet cut strawberry shaped citrine drop earrings set onto white gold and diamond encrusted leaf mounts linked by 3 single diamonds £350-400
236	Large single stone diamond pendant mounted in a circle of smaller diamonds with small diamond link to white gold neck chain. Approximately 1.85ct of diamonds £2200-2500
237	Pair of white gold and diamond stud earrings with large single stone each surrounded by a circle of diamonds. Approximately 0.88ct £1200-1500
238	9ct gold and rosegold bracelet. 18cms long, 2.3cms wide, approximately 53gms £400-500
239	9ct gold shaped necklace, 40cms, 42.6gms £450-500
240	18ct opal and diamond bar brooch £550-650

## Bygones & Larger Collectables

241	Child's High Stool £15-20
242	Indian brass 2 handled planter £10-15
243	Arts and Crafts copper coal box £10-15
244	10 bygone tins and contents £15-20
245	Bundle of 4 walking sticks £8-10
246	Box of wooden furniture handles £15-20
247	6 miscellaneous Art Deco items £15-20
248	4 medical bottles with Optrex eye jar and small suitcase containing sewing equipment, early Housewife including Vol 1, 1939 and 2 others £25-35
249	Taxidermy Mirror Carp and taxidermy Perch £5-10
250	Taxidermy cased display of Victorian birds £20-30
251	Taxidermy cased display of Grouse and Snipe £20-30
252	Egyptian mother of pearl inlaid drum £15-20
253	3 tribal items including 2 framed sets of 3 masks £20-30
254	Carved wood tribal figure £20-30
256	2 tribal masks £30-40
257	1970 Eskimo carvings £20-30
258	Norwegian lidded cow horn on stand £15-25
259	Binoculars and barometer £15-20
260	Magic lantern and approx 550 slides of country scenes £50-100
261	Printer's tray £10-15
262	Small brass canon, brass letter rack and wrought iron candle stand £15-20
263	7 items of pewter and metalware including lidded tankard, ladle, candlesticks etc £20-30
264	Copper circular tray £20-30
265	Arts and Crafts wrought iron and copper spirit kettle £70-100

Lot No Description

266 Brass and cranberry glass oil lamp with  
ruby glass shade  
£60-80



- 
- 267 Copper etching plate £50-70
  - 268 Box of glass and ceramic furniture handles £20-30
  - 269 2 boxes of leather working tools with lead work plate £30-40
  - 270 Set of letter punches £15-20
  - 271 4 various type rulers - 3 ivory £20-30
  - 272 Wooden pen and ink stand, and caddy box £20-25
  - 273 Pair of Elkington plated candlesticks, plated 3 branch candlestand and ormolu lamp fitting £50-80
  - 274 Oak and brass mounted fruit bowl and Trench Art pair of decorative brass vases £18-25
  - 275 Gilt glass topped display box and brass B.O clock £20-30
  - 276 J Halden & Co. Draughtsman's brass rolling ruler in mahogany box £15-20
  - 277 Carved mahogany table centrepiece with lion, oriental vase, brass vase and Indian style bowl £20-30
  - 278 Wall banjo barometer £15-20
  - 279 Oak framed barometer £25-30
  - 280 German Black Forest cuckoo clock - 3 weight movement £20-30
  - 281 Wall mounted Smiths 8 day, early bakelite clock - running order £25-30
  - 282 Domed Kern brass clock and key - running order £25-30
  - 283 Napoleon style mantle clock chiming strike with key - running order £15-20
  - 284 Oak cased Art Deco mantle clock £15-20
  - 285 Oak cased mantle clock with K & P £5-10
  - 286 Late 18thC mahogany wide bodied longcase clock with arch top, painted dial and 8 day movement with seconds dial and calendar. Needs attention £250-300
  - 287 Mahogany and marquetry topped sewing box £20-30
  - 288 Large rosewood and satinwood box £25-35

---

289 Oak Edwardian stationery cabinet. Well fitted with fold out writing slope, internal divisions, drawers, pen holders. Brass carry handles to either side.  
£100-150



## Silverwoods 30 July 2009

Lot No	Description
290	Folder of old prints and maps £15-20
291	3 early 20thC scrap albums £30-50
292	Album of approximately 138 general early 20thC postcards £20-30
293	2 albums of postcards relating to Monarch of the 20thC £30-50
294	Red album of approximately 400 postcards including sweetheart and general scenes £50-80
295	Brown post card album with approximately 400 postcards, sweetheart cards and humorous £50-80
296	2 old albums of stamps £10-15
297	Mixed lot of tea and cigarette cards in albums £15-20
298	2 early plastic dolls and child's chair £25-35
299	1961 Barbie doll with clothes, stand and booklet £30-40
300	Bagatelle board £15-20
301	Old St Bruno tobacco tin with 8 assorted crowns, set of lawn or carpet bowls, old Bezique set and cased playing cards £5-8
302	Diecast models of HMS Hood and German Bismarck with relevant paper ephemera £5-10
303	Electronic talking 'Battleship Command' £10-15
304	Steiff Millenium Bear with medal - boxed £50-80
305	Violin and bow - cased, little used £30-50
306	Box of fans £5-10
307	German celluloid doll and Turtle mark 25/55 £50-70
308	Simplex typewriter, model A, in box £30-40
309	Plastic model Dalek £25-35
310	Collection of Action Man figures, clothing, equipment, vehicles and associated items £50-100
311	Christening robes etc £20-30
312	Ladies mink jacket £5-10
313	1960 ballgown £15-20
314	Chenille table cover and Victorian rug plus various lace and suitcase £5-10
315	Set of 3 matching suitcases £30-40
316	1 ladies parasol and walking cane £15-20
317	2 x silver mounted walking canes £15-20
318	2 x swagger sticks, bugle and tankard £20-30

### Edged Weapons

319	Victorian sword by Harris of London with leather scabbard. 80cm blade and wired grip £45-60
320	19thC sword in steel scabbard. Stamped B.C. 90cm curved blade £45-60
321	19thC sword in steel scabbard. 83cm blade, wooden grip £45-60
322	19thC sword in steel scabbard. 88cm blade, wooden grip £45-60
323	19thC sword in steel scabbard by Bleckman-Solingen. 88cm blade, wired leather grip £45-60
324	Robert Mole & Son Birmingham, George V Royal Artillery sword in steel scabbard with wired skin grip. 90cm blade £45-60

## Silverwoods 30 July 2009

Lot No	Description
325	Dress sword in chromed scabbard with wired grip. 77cm blade £45-60
326	N Jones & Co London. Sword in leather scabbard with wired grip. 83cm, rusty blade £45-60
327	19thC curved sword in steel scabbard and leather grip. 83cm blade £45-60
328	Edward VII ceremonial sword in wooden scabbard with wired grip. 83cm blade £45-60
329	George V sword in leather scabbard with wired grip. 82cm blade £45-60
330	Bernhard Richter Coln ceremonial sword in leather scabbard with wired brass grip. 66cm blade £45-60
331	George V officer's sword in leather scabbard with wired grip. 83cm engraved blade £45-60
332	George V officer's sword in steel scabbard with wired grip. 83cm engraved blade £45-60
333	George V Royal Marines officer's sword in leather scabbard with wired grip. 82cm blade £45-60
334	19thC sword, marked EED. No scabbard, taped up grip. 90cm blade £45-60
335	Edward VII sword in leather scabbard by Wilkinson Sword Co Ltd. Wired grip, 83cm engraved blade £45-60
336	19thC sword in leather scabbard with wooden grip. 83cm engraved blade £45-60
337	19thC sword in steel scabbard with wired grip. 86cm blade £45-60
338	19thC sword in steel scabbard with leather grip. 84cm blade £45-60
339	20thC sword in metal scabbard with wired grip. 84cm blade £45-60
340	Officers sword in steel scabbard with wired grip. 83cm blade £45-60
341	19thC dress sword in leather scabbard with wired grip. 83cm blade £45-60
342	19thC sword, no scabbard. 86cm blade £45-60
343	19thC sword, no scabbard. 86cm blade £45-60
344	Middle Eastern sword in damaged leather scabbard with wired wooden grip. 80cm blade £45-60
345	George VI sword in steel scabbard with wired grip. 80cm blade £45-60

## Books

346	H G Wells, 12 volume set on blue boards, printed in London 1933 by Waterlow £30-50
347	Charles Dickens, 16 volumes set illustrated by Phiz on red boards with embossed facsimile signature. Printed in London by Hazell, Watson & Viney £30-50
348	4 volumes of Ruskin and 4 volumes of Spectator £20-30
349	5 volumes of works by Goethe, plus 3 others, 6 volumes 'Beloes Anecdotes 1-6 £20-30
350	1 volume - The works of Shakespeare by Charles Knight £5-10
351	Who's Who 1997 £5-10
352	Motor Racing and Motor Cycles 1956, 2 books of caricatures by Sallon of the Daily Mirror £15-25
353	1930's Mickey Mouse pop-up book £25-35
354	5 books on Marilyn Monroe £20-30

## Silverwoods 30 July 2009

Lot No	Description
355	Box of old story books by Henty £10-20
356	Box of 10 leatherbound antiquarian books £15-25
357	2 boxes of books including three dictionary volumes and four leatherbound books £10-20
358	Janes 'All the Worlds Aircraft' 1975-76 and Janes 'Weapon Systems' 1983-84 £20-30
359	18thC volume of music scores £30-40
360	2 volumes Wood Natural History, vols II and III £20-30
361	15 volumes including children's books, 10 first editions (two James Bond) £30-40
362	4 volumes Great Exhibition Catalogue, Wilkie Collection, Shakespeare and Punch £40-50
363	12 volumes including 4 Stroud, Daily Mail etc £10-20
364	7 volumes Illustrated London News 1935 - 1939 £30-40

## Pictures & Prints

365	Susan Kuznitski, signed, Limited Edition print 'The Weaver', oil painting and 2 prints £20-30
366	J R Brown, pair of signed pencil portraits £40-60
367	Framed woolwork £10-20
368	Framed Print 'Twixt Love and Duty' with Rudyard Kipling poem 'The Absent Minded Beggar' £15-25
369	Pair of framed sets of 5 woodcuts in Arts and Crafts style £15-20
370	Pair of French silk pictures of boy and girl £40-50
371	4 framed prints including Keith Melling, Alan Ingham etc £25-40
372	Pair of 19thC Crysoleums £30-40
373	6 x Japanese watercolours £30-40
374	Utagwa Kuniyoshi est 1797 - 1861. Set of 6 prints of Samurai warriors. Limited edition of 1,000 pieces produced in 1974 £40-60
375	Utagwa Kuniyoshi est 1797 - 1861. Set of 6 prints of Samurai warriors. Limited edition of 1,000 pieces produced in 1974 £40-60
376	Utagwa Kuniyoshi est 1797 - 1861. Set of 6 prints of Samurai warriors. Limited edition of 1,000 pieces produced in 1974 £40-60
377	Utagwa Kuniyoshi est 1797 - 1861. Set of 6 prints of Samurai warriors. Limited edition of 1,000 pieces produced in 1974 £40-60
378	3 x handcoloured Victorian engraving prints of military scenes £30-50
379	Pair of oak framed coaching scenes 'The Deacons Mare and 'A Brush on the Road' £20-30
380	Pair of H J Reynolds watercolours of village snow scenes 1920 £30-50
381	1909 Derby print £10-15
382	Paul A Nicholas, Gauache on card - Kingfisher £40-60
383	Frank Holmes, pair of Venice watercolours £40-60

Lot No

Description

384 C W Richardson, 1895 oil on canvas.  
Priory cook selecting game. 56 x 41 cms,  
signed and dated. Unframed  
£200-300



---

385 In manner of Gianni, pair of small oils on canvas of lady and gentleman £50-70  
386 C F Hall, oil on canvas. Village pond and church beyond £20-30  
387 Vincent Selby, oil on panel of a country lane scene - signed £80-120  
388 Small oil painting of a Horseman overlooking a lake £40-60  
389 2 coaching scenes, watercolour on board £30-40  
390 Steven Townsend, watercolour, 'Pendleside Road', 28cms x 20cms £50-80  
391 Steven Townsend, watercolour, 'Winter in Bowland, 28cms x 20cms £50-80

---

392 Irish village scene, signed I M Kavanagh  
- oil on canvas, 50cms x 60cms  
£250-350



---

393 Charles Bentley, pair of London Marine scenes - 'Above Greenwich' and 'The Lower Pool' £50-80

---



394 Noel H leaver, watercolour.  
Possibly Surrey rural scene.  
36 cms x 54cms  
£1000-1200



---

395 Oil on canvas. Man with beard £30-40

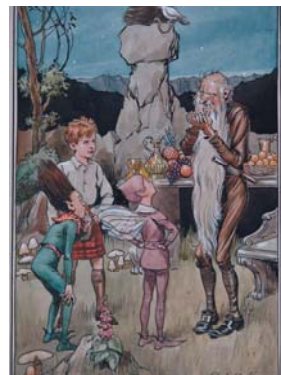
Silverwoods 30 July 2009

Lot No	Description	
396	2 paintings including watercolour of a fox entitled 'Spent' and picture of a Kingfisher £40-60	
397	W J Shackleton, watercolour. Oystercatchers on Malham Moor. 31 cms x 22 cms. Signed and dated 1918 £50-80	
398	19thC oil on canvas village scene at dusk £25-35	
399	F Cawthorne, watercolour. Bolton by Bowland, Main Street looking towards the church, circa 1900 £250-300	
400	E Cawthorne 1893, watercolour. The River Hodder at Whitewell with fisherman in the river £200-250	
401	E Cawthorne 1900, watercolour. Clitheroe Castle from Mearley with cattle and woodland in foreground £300-350	
401B	Pair of watercolour moorland scenes £30-40	
401C	J Glover, watercolour, country house scene, signed. 35cms x 26cms £150-200	
401D	S T Beer, watercolour. 'Near Newquay' £20-30	
401E	T Leslie Hawkes, watercolour. Shepherd and flock in a sunlit lane £30-50	
401F	Pair of oak framed hunting prints after Thomas Worth £30-40	
401G	Black and white print of Castle Street, Clitheroe dated 1921 £10-15	
402	Noel H leaver, pair of prints £20-30	
403	After Terry Harrison 'Chip and Run' golfing print - signed £10-15	
404	Pair of oval gilt framed small portrait engraving prints £15-20	
405	Engraving print 'Dejlig Er Jorden' Carl Thomsen £50-80	
406	Hand coloured lithograph 'Affluence' £15-20	
407	Clement A White, watercolour. Thatched cottage scene £30-40	
408	Japanese print on rice paper, Limited Edition Japanese print 4 of 200, Anthony Orme Limited Edition print 10 of 100 of a Northern Town Street scene £20-30	

Lot No	Description
409	George Schofield Dixon, watercolour illustration. 'The Wich Vaselina' - signed £100-200

---

410	George Schofield Dixon, watercolour illustration depicting a hermit and elves - signed £100-200
-----	---



411	I Willat Pinxil, oil on canvas. Ruined abbey at Howden £30-40
412	Walter Cecil Horsnell, oil painting on board. River Wharfe and farmstead at Hubberholme circa 1970. Signed Walter Horsnell, 50cms x 75cms £50-100
413	Pair of Victorian oil on canvas portraits in heavy rosewood frames and with gilt moulds £50-100

## Furniture & Interior Décor

414	Set of 4 inlaid dining chairs £70-100
415	Set of 4 Victorian mahogany dining chairs £60-80
416	Mahogany hall chair £30-35
417	Pair of Victorian mahogany stand chairs £20-30
418	Beech and ash Windsor high back armchair with central splat £40-50
419	Pair of Victorian balloon back chairs by Gillows £30-50
420	Pair of Victorian spoon back chairs £20-30
421	Set of 4 drawing room chairs £40-60
422	Victorian spindle back captain's chair £30-40
422A	Pair of Chippendale style mahogany dining chairs £30-40
423	Country Kitchen ladies rocking chair £20-30
424	Set of 4 Victorian spoon back chairs £30-40
425	Quality carpet square, wine ground with cream borders - side borders removed. Heavily decorated in Eastern style with flowering trees. 20ft x 12ft £50-100
426	Large good quality Chinese rug. Red ground with floral pattern. 15ft x 12ft £50-100
427	Oak 2 door glazed bookcase top £20-30

Silverwoods 30 July 2009

Lot No

Description

428 19thC mahogany butler's try on fold up stand  
£50-80



- 
- 429 Mahogany window table £20-30  
430 Old charm dresser with plate shelves £60-80  
431 G Plan glass top table with revolving undershelf £20-25  
432 G Plan teak and glass circular 5 leg coffee table £30-40  
433 Glazed and illuminated corner cupboard £40-50  
434 Oak coffee table £20-30  
435 Edwardian mahogany dressing table with mirror £30-40  
436 Early 20thC desk with fold away typewriter stand and typewriter £20-40  
437 6 dining chairs by Berry of Chipping, 2 carver and 4 stand chairs £50-80  
438 Oak dining table with draw leaves £40-50  
439 Reproduction yew wood effect kneehole desk with 2 pedestals £80-120  
440 Oak swivel office chair, circa 1920, by The Globe Wernicke Company London  
£50-80



---

441 Small painted pine wall hanging  
cabinet decorated with Kingfishers  
£40-50



---

442 Small painted pine desk top £30-40  
443 Oak spoon rack with openwork back and candle box £100-150

Lot No	Description	
444	Miniature Scotch chest of 2 over 3 drawers with secret drawer over £180-220	
445	18thC mahogany Malhamdale salt box with openwork back and drawer beneath £80-120	
446	18thC mahogany candle box with openwork back £70-100	
447	Wood standard lamp £10-15	
448	Piano stool £25-35	
449	Window table £20-25	
450	Tripod base sewing table with octagonal top and lined compartments £60-80	
451	Jewellery display case with key £15-20	
452	Mahogany chest of 5 drawers £40-50	
453	Oak woolwork top stool £10-15	
454	Oak 3 panel coffer £60-80	
455	Victorian walnut inlaid flat front 2 door glazed credenza with 3 interior shelves and gilt mounts and banding £250-300	
456	Inlaid mahogany quartetto of tables £150-200	
457	Victorian mahogany Scotch chest of drawers £120-150	
458	Early oak gateleg table for restoration £20-30	
459	Oak plant stand £30-40	
460	Oak overmantle fire surround £25-35	
461	Old charm style dresser base, 3 drawers over 3 doors £40-50	
462	Victorian mahogany buffet, comprising 2 door storage cabinet surmounted by shelves £50-70	
463	Playel 51656 mahogany cased iron frame 6 octave piano circa 1860. Raised on carved cabriole supports £150-200	
464	Small mahogany round top table on spindle turned legs £30-40	
465	Early 20thC mahogany bureau bookcase £80-120	
466	Victorian oak tall cupboard comprising 2 door shelved cabinet surmounting 2 over 3 drawer base £250-300	

Lot No Description

467 Georgian mahogany chest of drawers,  
3 over 2 over 3  
£180-220



468 3 bedroom chairs with velvet type material seats £20-30  
469 Late 19thC oak bedroom suite, comprising double wardrobe, dressing table,  
washstand and bed ends featuring Chinese decorative and applied circular and  
oval panels £500-650  
470 Nest of 3 mahogany tables £25-35  
471 Mahogany window table £20-30  
472 Georgian mahogany corner washstand for restoration £20-30  
473 Green leather upholstered tub type chair circa 1920 £50-80  
474 Reproduction oak credence cabinet £50-60  
475 Oriental black lacquered 2 door cabinet, with floral decoration and applied  
figures £40-60  
476 Early 20thC mirror back sideboard £150-200  
477 Mahogany console table on reeded legs £60-80  
478 Edwardian mahogany mirror back sideboard £80-120  
479 Georgian mahogany tripod table on fluted column with birdcage snap top £200-  
250

480 19thC mahogany fold over top demi lune  
tea table on tapered legs with spade feet.  
String inlaid and cross banded  
£200-250



481 Arts and Crafts oak mirror back sideboard £400-600  
482 Early 20thC mahogany full size competition standard snooker/billiards table by  
Willie Holt, Burnley Billiard Works. Stands on 8 wavy turned legs.  
Refurbished beize and cushions, approximately 10 years ago. Complete with  
balls, cues, rests, overhead light and scoreboard £2000-3000