



**Silverwoods**  
of Clitheroe

*Antiques Auctioneers of distinction and quality*

**Spring Fine Arts Sale**  
**On**  
**Thursday 29<sup>th</sup> April 2010**  
**at 10.00am**

at the Silverwoods Auction Room  
Clitheroe Auction Mart  
Lincoln Way  
Clitheroe, Lancashire, BB7 1QD

Viewing Times

Tuesday 27<sup>th</sup> 4.00pm – 6.30pm

Wednesday 28<sup>th</sup> 10am – 2pm

Thursday 29<sup>th</sup> from 8.30am to start of sale

Or by appointment

Sale Starts at 10am

Tel:- 01200 423322      Fax:- 01200 429263  
Buyers Premium – 17.63% (including VAT)

Entries are invited on every Monday between  
9am – 12 noon  
Other times available by appointment  
Please contact Wilf Mould

---oo0oo---



Lot 147



Lot 206

**CERAMICS**

- 1 A Crown Devon Fieldings musical jug,  
'On Ilkla Moor B'aht 'at', 20cm high  
£30-40



- 
- 2 A continental pottery night light, as two owls with glass eyes, 15.5cm high  
£10-20
- 3 A pair of Royal Dux figures, as a shepherd and shepherdess, numbered 2261  
and 2262 respectively (both A/F), 25cm high £30-40
- 4 A German porcelain figurine, as a Chinese woman, seated, with fan, late 19th  
century, 11cm and a group of eight items collectable china and glassware (9)  
£40-60
- 5 Five German porcelain pin cushion dolls, three incomplete, the largest 17cm  
high and a 1930s circular hand mirror (6) £25-40
- 6 A selection of Royal Crown Derby, 1128 'Imari' pattern, tea for two (7 items)  
£100-150
- 7 A pair of Spode Copeland for T Goode & Co., Asiatic Pheasant pattern plates,  
late 19th century, 23cm diameter £30-50

- 
- 8 A Prattware figure, possibly depicting Venus beside a stylised dolphin,  
rectangular base, 'H' mark in blue to underside, early 19th century, 15cm high  
and another, as a toper astride a barrel, 8cm high (2) £80-120
- 9 A Paragon 1937 Royal Wedding commemorative plate, 32cm diameter  
£50-80



8



9

- 
- 10 Two Coalport Mayflower beakers, original boxes £30-40
- 11 Six Coalport 'Composers' oval plaques £30-40
- 12 A pair of Royal Dux porcelain figures, respectively as a peasant boy and girl,  
each with a pitcher, 21.5cm high £60-100
- 13 A Carlton 'Chinaland' vase of ovoid form, hand decorated on a dark blue  
ground, 23cm high £70-100
- 14 A Victorian majolica Chinese design 'bamboo' teapot, 22cm high £20-30
- 15 A pair of Grimwades pottery plates, transfer-printed and gilt-lined with  
military subjects after Bruce Bairnsfather (one with hairline crack), 25cm  
diameter £50-70

Lot No

Description

- 16 Three pieces of Hammersley 'Autumn Gold', comprising teapot; fruit basket and jug vase £40-60



- 17 A pair of Heubach bisque porcelain figures, as a peasant boy and girl, she leaning on a pitchfork, late 19th century, 32cm high £40-60  
 18 A Beswick pottery model of two Siamese kittens no. 1296 £15-20  
 19 A Beswick, Irish Setter, no. 966, (gloss) £15-20  
 20 Six various Beswick pottery figures of birds; another Royal Worcester example and four others, various (11) £30-50

- 21 A prattware pottery figure of a recumbent lion, early 19th century, 11cm wide and two others, similar, 11cm and 8.5cm wide respectively (3) £200-300  
 21A A pair of Staffordshire pottery figures of cockerels (damages) early 19th century, 11cm high £60-80  
 21B A pearlware pottery figure of a recumbent sheep, spongeware-decorated, early 19th century, 14cm wide £80-120



21



21A



21B

- 22 A set of eleven French Creil Pottery, transfer-printed, creamware nursery plates, decorated with cryptic pictorial texts within vine borders, 19th century, 21.5cm diameter and another, similar (12) £150-180  
 23 A Japanese imari scallop edge plate, 32cm diameter £20-30  
 24 A pair of Japanese imari style vases with, flared necks, 30cm high £40-60  
 25 A pair of continental blue and white transfer-printed baluster vases in the oriental style, late 19th century, 26cm high £60-80  
 26 A tin-glazed dish, spongeware-decorated with stylised plant forms, probably Spanish, 18th century, 27.5cm diameter and two others, different (3) £100-150  
 27 A Coalport footed candy dish, boxed and a Coalport elite sauce boat and stand, boxed (2) £20-30  
 28 A pair of Wedgwood Jasperware American Independence Bicentennial plates; six Wedgwood American Bicentennial 8" plates celebrating six features of the War of Independence and a plate with all six scenes, all in original boxes (9) £50-100  
 29 Thirteen Wedgwood Jasperware rectangular plates, to commemorate the original thirteen American states, original boxes £50-100  
 30 Nine Wedgwood Jasperware Christmas and other commemorative plates, original boxes £70-100

Silverwoods 29 April 2010

Lot No

Description

31 A Royal Worcester vase; two items of Coalport, comprising vase and dish; a Wedgwood vase; three pin trays; four items of Aynsley pottery, comprising three vases, a dish and three others (14) £40-50

---

32 Three items of Royal Crown Derby, comprising of a small lidded jar; a bon bon tray and a lidded dish £50-70



32A A Pointons, imari design, twelve-piece part tea and coffee service, pattern nos. 2614 and 2172 £30-50

33 A Royal Doulton Kingsware jug, decorated with characters from Dickens, silver rim, London 1907, 19.5cm high £60-80

---

34 A Royal Doulton 'Pied Piper' jug, limited edition no. 504/600, complete with original certificate, signed by Charles G No

35 A large Capo di Monte group 'The Cheats' depicting a group of three boys playing and cheating at a game of cards, 55cm wide £200-300



34



35

36 A Derby Crown Porcelain Co., figure of a young man (A/F), 18.5cm high £40-60

37 A Sitzendorf porcelain figure, the Cellar Master's Apprentice, as an inebriated boy with empty pannier, uncorking a bottle, painted underglaze blue mark, 19th century, 21cm high £50-70

38 A Hammersley bone china tray and eight items of Hammersley miniature pottery (9) £30-40

---

39 A Dresden figure, 'Knight of the Garter', modern, 27.5cm high £40-60



Lot No

Description

- 40 A Chinese blanc-de-chine porcelain figurine of Guanyin, seated on a rock, probably early 18th century, 20.5cm high £200-300
- 41 A Moorcroft Peony pattern, squat baluster vase, dated (19)99, 16.5cm high, original box £200-250
- 

- 42 A Moorcroft Delonix pattern baluster vase, dated 2002, 22cm high, original box £180-220



- 43 A Moorcroft, Ragged Poppy pattern baluster vase, modern, 36cm high, original box £250-350
- 44 A pair of English porcelain coffee cups and saucers, the cups each with trumpet shaped bowl and scroll handle, decorated in gilt with a panel of fruiting acorn branches above a marbled band, the saucers conforming, early 19th century; with hardwood display stands (2) £100-150
- 

- 45 A Derby porcelain model of a squirrel, modelled seated on its haunches, eating a nut, polychrome-decorated and gilt, early 19th century, 8.5cm high £300-500



- 46 A Royal Worcester blush ivory pin tray, in the form of an open clam shell with a gilt terrapin, puce mark 928, 11cm wide £80-120
- 

- 47 A Berlin porcelain figure, as a boy skater, emblematic of March, inscribed 'Martius' to the reverse and applied with an airean plaque, impressed and underglaze blue mark to the underside (slight damages), 19th century, 10cm high £50-70



Lot No

Description

48 A set of three 'sevres' covered chocolate pots, polychrome-decorated and gilt with ribbon bands and floral swags, the covers with bud finials, 19th century £100-150

---

49 A Mintons for T Goode & Co., covered breakfast cup and saucer, with matching miniature cream jug and integral sugar, silver and gilt-decorated with aesthetic-style naturalistic devices, the cover monogrammed 'A', circa 1890 £50-80



50 A Sitzendorf porcelain box and cover, of leaf form, relief with flowers, polychrome-decorated with floral sprays and gilt-lined, 19th century, 13.3cm wide £70-100

51 A Berlin porcelain open polychrome-decorated and gilt, salt, as a putto beside two open oval baskets, scrolling base, 12.5cm high £70-100

52 A Meissen porcelain covered pedestal inkstand, of ovoid form, polychrome-decorated and gilt with sprays of flowers on a blue ground, internally with an inkwell and caster, on three Egyptian term supports and circular base, 19th century, 14.5cm high

53 A small Coalport pierced vase, relief moulded with flowers and foliage, polychrome decorated, underglaze blue mark, 19th century, 12.5cm high £100-150

---

54 An English pottery 'Louis Wain' model of a futuristic cat, in the form of a spill holder, painted black, white, green and red, with grinning expression, printed mark including Trident and Registration number 688213, 14cm £500-800



55 A Royal Worcester cabinet plate, decorated with fruit on a bank, signed H Ayrton, gilt border, 27.5cm diameter £200-300

---

56 A Royal Crown Derby shaped circular cabinet plate, by Albert Gregory, signed, centrally with a bird in a landscape, the border reserved with floral panels, within a rich royal blue and gilt border, date coded for 1928, 22.5cm diameter £500-700



Silverwoods 29 April 2010

- | <u>Lot No</u> | <u>Description</u>   |
|---------------|--|
| 57            | A Royal Worcester plate, handpainted with peaches and grapes, by M Morris, 10cm diameter £30-40  |
| 58            | A Chinese Canton porcelain circular dish, reserved with floral and figural scenes, in an ormolu frame, on four cast scrolling supports, late 19th century £250-350 |
- 

- 59 A bisque parian ware bust Earl of Derby, impressed mark, E W Wyon, published by John Stalk Etruria, registered February 1867, 35cm high £60-80



- 
- 60 A pair of Chinese baluster crackleware vases, polychrome-decorated and with twin gilt dragon handles to the neck, modern, 68.5cm high £100-120

GLASS

- 61 Two Victorian green glass mineral water codd bottles, Globe Trademark, by Redfearn Bros., Barnsley, 22cm high £20-30
- 62 An opalescent glass fruit bowl in the Lalique style, relief-moulded with water lilies, 26.5cm diameter overall £30-40
- 64 A set of four Wedgwood lead crystal whisky tumblers £20-30
- 

- 65 A silver-mounted glass flower vase, Birmingham 1927, 27cm high £40-60



- 
- 66 A Royal Brierley opalescent glass vase of globular form, 16cm high and a Dartington cranberry glass vase, 15cm high (2) £30-50
- 67 Three various cut crystal square section spirit decanters and stoppers, modern, the largest 28.5cm high (3) £20-35
- 68 A reproduction glass ship's decanter and ball stopper, etched with a four-masted schooner, 29cm high £20-30
- 69 A pair of Victorian Bristol blue jug decanters, with plated mounts and cork stoppers, 21cm high and a pair of silver bottle labels, Sherry and Madiera (4) £250-350
- 70 A George III Bristol blue glass and gilt barrel-shaped decanter, and stopper, shrub, 19.5cm high £60-80

Lot No

Description

- 71 A millefiore glass mushroom, 10cm high £50-70  
72 A Victorian glass large pedestal vase, of circular section, the bowl inscribed 'Margerison's', above foliate swags, on a short circular pillar and spreading circular base, 21cm high £50-70



69



70



71



72

- 
- 73 A pair of George III mallet-shaped decanters and mushroom stoppers, engraved with various ornamental bands, triple ring necks (some chipping), 25.5cm high £100-150
- 

- 74 A pair of French or Bohemian opaque amethyst glass pedestal vases, each with baluster body cold enamelled with a stag amongst trees and sedges, gilt line detail, circa 1860, 40cm high £100-150



**SCIENTIFIC, MUSICAL & CURIOSITIES**

- 75 An 'Accousticon' vintage hearing aid, with accessories, original case £15-25  
76 A Victorian cased hydrometer by Sikes, retailed by W A P Onsberg & Co., London and a similar hydrometer retailed by Loftus of Oxford Street, London (lacks thermometer) (2) £40-60  
77 A Lachenal, forty-eight button concertina, no. 29582, fitted case (damages) £150-200  
78 A Victorian copper and brass coaching horn, 125cm £80-120  
79 A Stentor, three-quarter size cello, in padded case £30-50  
80 An early 18th century brass and horn powder scale, with a brass weight, in a fitted wooden 'guitar' case, 31.5cm long £40-60  
81 An iron and brass monocular microscope, no. 34805, by Watson and Sons of London, cased, late 19th/early 20th century £200-300  
82 A collection of antique microscope slides in six boxes (6) £100-200

Lot No

Description

- 83 A scratch built radio-controlled, steam driven model of a pilot boat, John Briggs, 136cm long , with carrying frame £50-80



- 84 A collection of ten assorted fans, in varying states of disrepair, 19th century (10) £70-100
- 86 A Victorian papier mache basket, polychrome and gilt with flowers, swing handle, 26.5cm diameter; a cast brass, square section tobacco jar and cover, with lead weight to interior, late 19th century, 13cm high; a late Victorian cast brass deskstand, 17.5cm wide and an 1897 Queen Victoria Jubilee commemorative glass beaker, 11cm (4) £40-60
- 87 A continental (possibly Danish) court sword, with rapier blade, bronze hilt and mother of pearl grip, 19th century £150-200
- 88 Two silver mounted walking canes, different, late 19th century £30-50
- 89 An ethnographic, carved wood figural staff, 97cm long £50-80
- 90 An Indian brass circular shield, red and black-enamelled with battle scenes, and further decorated with four bosses, 20th century, 36.5cm diameter £40-60
- 91 A pair of Chinese cloisonne vases of baluster form, floral decorated, modern, 31cm high £80-100
- 92 An Indian ivory tusk section vase, carved in the round with figures in a landscape, wood base, circa 1950, 22cm high £70-100

- 93 Three Chinese sectional carved ivory figures, comprising a pair of labourers and a musician, all with signatures to the underside, 19th century, the largest 13cm high (3) £100-150
- 94 An Indian cast bronze figure of Lakshmy, probably 19<sup>th</sup> century, 10.7cm high and another, Navanitanritta Murti, 8.5cm high (2) £70-100



- 95 A Chinese rose quartz figure group, as an oriental woman with feng huang birds, 23cm high, on hardwood stand £500-700
- 96 A pair of Chinese cinnabar lacquer boxes and covers, of circular baluster form, profusely decorated all over with precious objects, flowers and other devices (damages), 18th century, 10cm high £200-300
- 97 An album of forty-four late 19th century Chinese leaf paintings, depicting birds among flowering branches, fruit, blossom and Chinese figures in contemporary costume, an inscription to the front of the album reads Alfred Ephraim Eccles, Albion Villa, White Coppice £300-350

Silverwoods 29 April 2010

<u>Lot No</u>	<u>Description</u>
98	An automapic, automated road map, original box; three 'erotic' 8mm striptease films, 1960's original boxes and a miniature chair, from Gardner Massachusetts (5) £30-50
99	An album of thirty eight autographs, mainly on photographs including Tom Cruise, Harrison Ford, Jean Simmons, Bob Hope, Hulk Hogan, Jon Pertwee, Tony Jacklin, Robert Mitchum £150-200
100	An oak pencil box with silver plaque to lid, 26.5cm wide £20-30
102	A period fortune-telling ball, early 20th century, 6cm diameter, in a case £40-60
103	An early 20th century Czechoslovakian Easter egg, in its original box, bearing a label, 'Panorama Egg' Ormil Chocolate Works, Prerov £20-50
104	Twenty turned bone and bead-mounted cotton bobbins, some inscribed with names £80-120
105	Twenty turned bone and bead-mounted cotton bobbins, some inscribed with names £80-120

---

106	Twenty turned bone and bead-mounted cotton bobbins, some inscribed with names £80-120
-----	---



---

107	Twenty turned bone and bead-mounted bobbins, some inscribed with names £80-120
108	Twenty turned bone and bead-mounted bobbins, some inscribed with names £80-120
109	A large collection of approximately sixty wooden and bead-mounted cotton bobbins £40-50
110	An album of postcards, including Blackpool aviation, topographical, real photo, social history etc £50-70
111	A set of miniature works of Shakespeare, in a stained wood open bookcase £40-60
112	An album of approximately 130 Great Britain first day covers and a Stanley Gibbons album of World Stamps (2)
113	Two Stanley Gibbons fanfare stamp albums, containing a general world collection including interest in Great Britain £50-70
116	A cased canteen of cutlery with Coalport china, 'Fool's Parsley' pattern handles and a selection of individually boxed items of cutlery to match £50-100

### COSTUME JEWELLERY & SILVER

118	A 9ct gold flexible link bracelet and a small assortment of costume jewellery (12) £120-150
119	A pink bakelite and brass mounted cigarette case, circa 1935, 9.3cm wide £15-20
120	A small selection of three pairs of silver earrings and a silver brooch mounted with a large citrine (4) £15-20
121	Three sets of cultured and paste pearls £20-30

Silverwoods 29 April 2010

<u>Lot No</u>	<u>Description</u>
122	A trinket box, containing mixed costume jewellery, cigarette holders, watch, watch case etc £40-50
123	A collection of antique brass spoons, comprising three seal top examples, different, 17.5cm, 16cm and 14.8cm respectively; a dog nose example, 19.5cm and a pair of long handled skimming spoons, 27.3cm (6) £70-100
124	A silver trumpet shape flower vase, 23cm and two silver candlesticks (all A/F) (3) £40-60
125	A pierced silver bon bon dish, Sheffield 1936; a pair of Victorian silver sugar nips; a silver napkin ring and an ivory napkin ring with silver monogram (4) £80-120

---

- 126 A George III silver cream jug, of oval form, angular handle, engraved decoration, made by Thomas Watson, Newcastle (date letter rubbed) and two silver-mounted scent bottles (3) £60-80



- 
- 127 A large two compartment, silver cigar box, London 1915, 17.5cm wide £80-120
- 128 A silver sauceboat, of rounded rectangular form, Birmingham 1937, (3.85oz) £20-35
- 129 A Portuguese silver ash tray, with shaped coin cigar holders, 18cm wide £50-80
- 130 A silver circular bowl, plain, London 1937, (8.5oz) £50-70
- 131 A Birmingham Mint, 1975 silver Christmas plate, limited edition, no. 172 of 1000, (7.7oz) in presentation box £50-100
- 133 Four silver apostle spoons, and a set of Tiffany cutlery comprising nine tea spoons and sugar nips
- 134 A Great War, Iron Cross, inscribed FW1813 W 1914 with crests £50-80
- 135 Silverware comprising: a pair of meat servers, Sheffield 1911; a christening set, comprising eggcup, spoon and napkin ring, Birmingham, 1946 and a copy of the anointing spoon, all cased (3) £50-70
- 

- 136 A silver five-piece condiment set, of pierced circular section, comprising a pair of pedestal salts; matching pair of pepper casters and lidded mustard, blue glass liners, Birmingham 1912, with two condiment spoons, cased £150-200

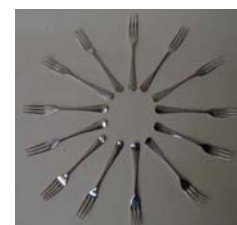


- 
- 137 A composite set of twelve George III triple-prong forks, various makers and dates £180-250

Lot No

Description

138 A composite set of twelve silver triple-prong dessert forks, various makers and dates and one other (13) £120-150



139 A composite set of ten George III triple-prong table forks, variously crested, different dates and makers and another, continental, fiddle pattern table fork (11) £180-250

140 A silver three-piece tea service, comprising tea pot; matching sugar bowl and milk jug, Sheffield 1891-1896 (38.7oz) £250-350

141 An Edwardian silver twin-handled loving cup, centrally decorated with a Celtic band, cast zoomorphic handles, made by Wakely and Wheeler, London 1929, (17oz), 22cm high £300-400

142 An Edwardian silver bon bon dish, of shaped square form, with decorated rim and base, made by Charles S Green & Co., Birmingham 1920, (6oz), 14.5cm wide £90-120

143 A Victorian silver four-slice toast holder, raised on four ball feet, made by Arnold E Williams, Birmingham 1917 £60-80

144 A pair of silver toast racks, to hold four slices, Birmingham 1920 £70-80

145 A pair of silver toast racks, to hold four pieces, Sheffield 1912 £70-80

146 An Edwardian silver circular rose bowl, chased with ribbon-tied swags and fluting, made by C S Harris, Birmingham, (20oz), 21cm diameter £350-450



147 An Edwardian silver rose bowl, of chased circular form, made by Finnigan and Sons, Birmingham 1902 (21oz), 21cm diameter £350-450

148 A silver four-piece tea service comprising tea pot; water jug; cream jug and sugar bowl, each standing on 3 paw feet, shaped edges, Sheffield 1938 (55oz) £350-450

149 A Victorian silver basket, of shaped rectangular form, pierced and chased with floral and scroll decoration, fixed handle, on four cast feet, made by Martin and Hall, Sheffield, 1897, (18oz), 29.5cm wide £350-450

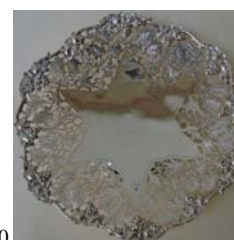
150 A Victorian silver pierced and embossed grapes and vine cake stand, made by HyC Sheffield 1963, (24oz) £300-400



148



149



150

Silverwoods 29 April 2010

<u>Lot No</u>	<u>Description</u>
151	A silver two-handled trophy, and cover, surmounted by a figure of a horse and jockey, made by Atkin Bros, Sheffield, 1912 (25oz) 26cm high £400-600
152	A four-piece silver tea service by Walker and Hall, Sheffield 1927, 72.46oz £700-900
153	An oval silver basket, pierced and with swing handle, on four ball feet, made by A Marks and Co., Sheffield 1923, (21oz), 28cm wide £200-300
154	A late Victorian silver teapot with pierced rim, made by Mappin and Webb, Birmingham 1914, (24.1oz) £250-300
155	A pair of oval silver bon bon dishes with shaped outer rims raised on four feet, made by Atkin Brothers, Sheffield 1912, (8oz) £150-200
156	A silver two-handled trophy and cover, urn finial, made by Viners, Sheffield, 1933, (9oz), 18cm high £120-150
157	A late Victorian silver lidded, tea caddy, of shaped oval form, decorated with fluting, made by William Allen, Chester 1897, (6oz) £120-150
158	A George V, silver mustard pot of lidded, bulbous form, on three shaped feet, original blue glass liner, made by Haseler Bros., London 1912, with matching spoons (2) £100-150
159	An Edwardian silver trinket box, heavily embossed with a figural scene to the hinged lid., the sides with floral and foliate scrolls, on four claw feet, made by T Hayes, Birmingham 1902, (4oz), 10cm wide £200-300

- 
- 160 An Edwardian silver trinket box, the hinged cover embossed with cherub heads bordered by scrolls and flowers, the sides with Art Nouveau scrolls, on four trefoil feet, made by H Matthews, Birmingham 1902 (5.5oz), 12.5cm wide £200-300



- 
- 161 A silver mounted shaving set, comprising brush and lidded cylindrical soap box, Birmingham 1926, cased £70-100

### MEDALS, FOBS, JEWELLERY & WATCHES

- 162 Seven various Masonic medals, enamelled and pewter £40-60
- 163 A silver and enamel long service medal, for the National Operatic and Dramatic Association and a gilt life member badge (2) £40-50
- 164 Four silver and enamel cycling medals, circa 1937 and 1938, London Clarion and three Woolwich cycling club (7) £80-120

- 
- 165 Three 9ct gold and enamel cycling medals, 1937, for 25 mile, 50 mile and 30 mile tandem, Woolwich Cycling Club £150-200



Lot No

Description

166 A second world war pair of Defence and Service medals, Italy Star, 1939; 45 Star and Africa Star; and Imperial Service medal inscribed 'William George Barton'; seven Boys Brigade badges and four crowns (17) £80-120

---

167 A group of three Great War medals in display frame, 447946 SJT.H.P Vernon P.P.C.L.I including a Military Medal, mounted and framed along with a small badge reading La Ville de Mons aux soldats de la tresieme division, Canadienne, BRE 11.9.1918 £300-400



168 A silver and marcasite set cameo brooch; a silver and marcasite 'bow' brooch; a silver and marcasite bracelet and a silver and marcasite necklace (4) £50-80

169 A silver-mounted otter's paw brooch £20-30

170 A Moorcroft Pansy design brooch, circa 1920, 2.5cm diameter £80-120

---

171 An Italian silver and micro-mosaic oval brooch, decorated with a bunch of mixed flowerheads on a blue ground, 20th century and a pair of matching ear clips (3) £25-40



172 A pair of bottle labels, of rounded rectangular form, each with a gadrooned and shell-decorated border, for sherry and port respectively, with attached chains, made by Hannam & Crouch, London 1816 £50-80

---

173 An art nouveau silver belt, composed of twelve cast flowerhead panels, joined by chains, dragonfly buckle, Birmingham 1904 £70-100



174 Jean Paul Gentil Alaux, portrait of a lady, bust length, oval miniature, signed and dated 1820, brass frame, 11.2cm high overall £200-300

175 A 9ct gold and amethyst set bar brooch; a 9ct gold dress ring and a gold pendant (3) £30-50

176 A 9ct gold necklace, of flattened link form, with aquamarine and diamond drop, cased £60-80

177 A 9ct gold-cased full hunter gents pocket watch, with top winder, Swiss made, (58 grams, gross) £300-400

Silverwoods 29 April 2010

<u>Lot No</u>	<u>Description</u>	
178	A gold plated, open face, top winding gents pocket watch	£20-30
179	A Movado, Swiss-made pocket/bedside watch, with leather-covered sliding covers, 7.5cm wide open	£120-150
180	A GB 1902 sovereign, soldered to a gold pendant mount	£100-120
181	A South Africa gold one pond piece, soldered to a gold pendant mount	£80-100
182	A 9ct gold charm bracelet, with eleven charms dependant (72.3gm gross)	£400-500
183	An 18ct gold ladies flexible bracelet, modern, (48gms)	£500-600
184	A 9ct gold and topaz ring	£50-70
185	A 22ct gold wedding band and an 18ct gold and ruby set ring (2)	£100-150
186	A 9ct gold and cameo set ring	£30-40
187	A 9ct gold aquamarine and diamond dress ring	£20-30
188	An 18ct white gold and gem-set dress ring, set with five stones	£30-50
189	An 18ct gold, diamond and gem-set ring	£70-100
190	A gold and diamond ring, set with five graduated brilliants	£150-200
191	An 18ct yellow gold and three-stone old cut diamond ring, (approximately 3.25 carat), circa 1930	£2200-2800



Lot No

Description

- 192 A four-stone platinum and diamond ring, old cut stones, (approximately 4.25 carat), circa 1930 £3000-4000



191



192

- 
- 193 A Tissot 18ct gold ladies bracelet watch in original box £380-420
- 

- 194 A 1930s platinum and diamond ladies cocktail watch, Brina Swiss 17 jewel movement, the circular case with eighteen diamonds to the border, the line bracelet with thirty-four diamonds £1500-2000

- 195 A Victorian cocktail style bracelet comprising of a central cluster of eighteen diamonds, mounted on a pave set diamond bow with one hundred and eight diamonds, the bracelet is a herringbone style link in fourteen carat white gold with a watch style clasp and a solvil Swiss watch movement £1000-1500



194



195

**SILVER PLATE & CLOCKS**

- 196 A WMF silver plated, shaped circular fruit bowl, chased with vines, three ball feet, 25cm diameter and five plain beakers by the same maker (6) £20-35
- 

- 197 An early Victorian Elkington plate, large presentation tea pot, spuriously crested, arched ebony handle, 32cm high £60-80



- 
- 198 A Victorian pewter lidded jug, of baluster form, wood handle, engraved presentation inscription, wood vase, 27.5cm high overall £15-25

- 199 A pair of electroplated bottle coasters, each with a pierced gallery with beaded border and turned wood base, 14.5cm diameter £50-70

Lot No

Description

200 A Victorian electrotype circular salver, relief-decorated after the antique with a battle scene around a central knop, ornamental border, 86cm diameter  
£200-300



201 A Victorian barometer, with circular dial and separate thermometer in heavy carved and stained wood surround, decorated with cherub, satyr masks, winged beasts etc, 74cm high £80-120

202 An Edwardian mahogany balloon-shaped mantel clock, the enamelled dial with Roman numerals, on four brass bun feet, 23cm wide £160-200



203 An Edwardian mahogany mantel clock, enamelled with Roman numerals, with decorative inlay to either side, flanked by brass pillars, on four brass button feet, 28cm wide £140-180

204 A mahogany and inlaid mantel clock, with Westminster chime movement, early 20th century, 28.5cm high £80-90

205 A Victorian rosewood bracket clock, by Charles Frodsham, London, the fusee movement striking on a bell, with 19cm white-enamelled dial, the drum-head case on bombe sides with carved scroll fronts, spreading plinth base, turned feet, 40.5cm wide, 46cm high £1200-1500

206 A mantel clock, the Japy Freres cylinder movement with Brocot escapement, striking on a bell, contained within an 18th century Dutch blue and white tinglazed baluster vase, with cast brass mounts and cover, 48cm high £500-600

207 A French three-piece ormolu and porcelain clock garniture comprising a mantle clock with striking movement, handpainted porcelain features and cast metal decoration on four lions paw feet and a matched pair of similar three branch candelabrum £800-1200



205



207

Lot No

Description

208 An Edwardian style 'Smiths of Enfield; wall clock, 40.5cm diameter £150-200

---

209 A continental boulle work bracket clock, in the Louis XV manner, of balloon form, cast brass dial with enamelled Roman numerals, glazed frieze and sides, the detachable top surmounted by a cast figure of time, cast supports, early 20th century, 75cm high; with a conforming bracket (2) £1200-1500

210 A late George III oak longcase clock, by Francis Turner, Rochford (Essex), circa 1800, the eight-day movement with arched brass dial, the glazed hood flanked by fluted pillars, brass ball and spike finials, 49cm wide, 225cm high £1500-2000



209



210

**BOXES & VINTAGE TOYS**

211 A Victorian coromandel and brass bound box, of gothic arch form, further embellished with engraving and agate bosses, monogrammed twin handles to sides, 26cm wide £150-200

---

212 A Queen Anne-style oyster walnut and fruitwood, line-inlaid glove box, of rectangular form, the hinged lid with moulded edge, the underside fabric-lined, the frieze fitted with a brass lockplate, late 19th century, 38.5cm wide £150-200

213 A Victorian ladies travelling set, in an ebonised and mother of pearl-decorated mahogany case, fitted with jars, bottles, mirror, letter compartment, hat pin holder, 30cm wide £250-350




212



213

214 Nine various boxed diecast toys and five others (14) £40-60

Silverwoods 29 April 2010

<u>Lot No</u>	<u>Description</u>	
215	A pedigree plastic doll, with walking mechanism, circa 1950, 51cm high £20-35	
216	A K & C Ltd shove halfpenny board, boxed and a 'Nine Men's Morris' table top board with 9 skittles (2) £35-50	
217	A Jacques chess set, in box, and a folding book-type games board (A/F) and a Corinthian bagatelle board, boxed (3) £25-35	
<hr/>		
218	A German Noah's Ark, the carved and painted wood ark containing six composition figures and thirty-four similar animals (damages), mid 19th century £200-300	
<hr/>		
219	A Hornby Dublo EDP11, 3RE 'Silver King' electric train set, boxed and various accessories, some boxed, including track; station fittings and a controller £60-100	
220	A Victorian pine and gesso dapple grey rocking horse, on trestle base, 130cm high overall £250-350	
221	Lionel Edwards R I., one volume 'Sketches in Stable and Kennel', 1933 first edition £120-150	

**PICTURES, PRINTS & PORTRAITS**

222	A collection of lithographs and other prints after Luciano Guarnieri in four portfolios £50-70	
224	After Robert Morden, 'The County Palatine of Lancaster', 17th century engraved map, later hand-coloured, 42cm by 37cm £30-40	
225	After Sibyl Kennedy, Crucifixion, monotype, 38cm by 23.5cm £30-50	
226	After Robert Taylor, 'Lancaster', first edition reproduction printed in colours, signed in pencil by Leonard Cheshire, 50cm by 60cm £60-80	
227	After Dorothea Buxton Hyde, Duck and Ducklings, limited edition print, signed and numbered 91/850, 41cm by 48cm £20-30	
228	After R Hardman Smith, The Bridge of Sighs, St John's College, Cambridge, signed and inscribed, coloured etching, 19cm by 26cm £30-40	

229	Hunt after Alken Jnr., The Grand Leicestershire Fox Hunt, coloured aquatints, published by I Laird, 48.5cm by 59.2cm (a set of four) £300-500	
-----	--	--

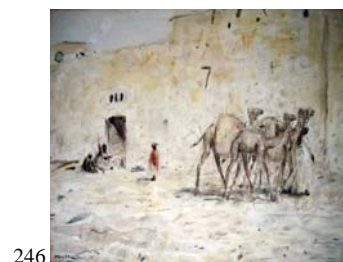


230	After Vincent R Balfour-Browne, The Corrie Dubh Royal (Notes from a Stalker's Diary) August 20th 'Corrie Dubh-Spied A Very Good Stag - In Velvet' reproduction printed in colours, signed in pencil in the margin, 37cm by 29.7cm and three others (a set of four) £200-300	
-----	--	--





<u>Lot No</u>	<u>Description</u>
231	A pair of continental embroidered and straw work pictures of saints, inscribed verso, 'Chateau de Vallery, Collection du Comte de Rochechouart, Appartenant à Emile Zola' 19th century, each 21cm by 13cm £70-100
232	Three portrait silhouettes, one of a gentleman, impressed mark verso, 'Taken at the Hubbard Gallery', circa 1835, black papier mache frame with leaf and ring suspension, 14cm by 12cm; another, similar, of a gentleman, labelled verso, 'Cut with common scissors by Mr Seville, without either drawing or machine', 14.5cm by 12.3cm and one other (3) £80-120
233	A Regency oval portrait miniature of a gentleman, bust length, verre eglomise mask, reeded frame, 12cm high and another, in a papier mache frame, brass suspension, 13.5cm high overall (2) £50-80
234	A pair of George III oval portrait miniatures, papier mache frames, brass suspensions (damages) and another continental pair, early 19th century (damages) (4) £80-120
235	A framed marriage certificate, 1853, 64cm by 48cm £40-60
236	A pair of framed Cash silk pictures of wren and robin £15-20
237	A crystoleum, after Bodenhausen, depicting a woman in classical dress, carrying a basket of flowers, late 19th century, 25.5cm by 14.5cm £60-80
238	A Regency sewn silk picture, depicting a cottage in a landscape, rosewood frame, 23cm wide overall £40-60
239	An 18th century hand-coloured, engraved ornithological print, 22cm by 18.5cm; another, botanical study, 24.5cm by 19.7cm and a Chinese watercolour on rice paper, depicting butterflies and flowers (damages), 18cm by 27.5cm (3) £30-50
240	A pair of overpainted prints depicting coaching scenes, early 20 <sup>th</sup> century, each 13cm by 27cm £30-50
241	E B., The Shambles from Lancaster Road (Preston), signed with initials, watercolour, 31cm by 50cm and another, by the same hand, 31.5cm by 42cm (2) £80-120
242	J Orrock, pastoral landscape, signed and dated 1875, watercolour, 21.5cm by 34.5cm £100-150
244	Luciano Guarneri, Portrait of Hylda Hodgson, signed, inscribed and dated, London 1965 lower right corner, mixed media, 29.5cm by 27cm £20-30

---

245	Edward Mossforth Neatby, view at Bolton Abbey, signed and dated 1945, watercolour, 24cm by 34cm £100-150
246	Marius Alexander J Bauer, An Oriental Scene with a camel herder and other figures, signed lower left corner, watercolour, 50.5cm by 64.5cm £2000-3000



Silverwoods 29 April 2010

<u>Lot No</u>	<u>Description</u>	
247	S Garbutt, Brighton sea front with sailboats on the beach and people parading along the promenade, signed watercolour, early 20th century, 42.5cm by 62cm £300-400	
248	W J Slater, cattle grazing in a summer meadow, signed, watercolour, 61cm by 45cm £200-300	
249	Alfred Maile, Hawkshead Church and Cottages, signed and dated 1878 lower right, watercolour, 23cm by 30.5cm £300-500	
251	William Walton Armstrong, Pottery Vase with White Flowers, buildings through a window beyond, signed and dated 1953 lower left hand corner, oil on canvas, 48.8cm by 60cm £200-300	
252	Claude William Harrison, Finale, signed and dated (19)97 and titled verso, tempera on board, 49cm by 59.5cm £2000-3000	
253	K Percy (?), estuary landscape, signed, Gouache, 22.5cm by 43.5cm £20-35	
254	English School, 19th century, sheep on a moorside, oil on canvas, 20cm by 24cm £100-150	
255	Luciano Guarnieri, Self-Portrait of the Artist in his Studio, signed centre upper edge, oil on panel, 38.2cm by 31.3cm £150-200	
256	John Bampfield, guards outside Buckingham Palace, signed, oil on canvas, 61.5cm by 76.5cm £350-450	
257	English School, mid-18th century, portrait of a bay racehorse with jockey up, oil on canvas, 34.5cm by 45cm £250-350	
258	Margaret Chapman, Lancashire street scene, signed, oil on panel, 59.5cm by 44.3cm £400-500	
259	H R Hall, Highland cattle by a Burn in a Scottish landscape, signed, oil on canvas, 60cm by 90cm £500-700	

Lot No

Description

260 H R Hall, Highland cattle grazing in a Scottish landscape, signed, oil on canvas, 60cm by 88cm £500-700

---

261 Augustus Wall Calcott, R A., A Dutch landscape with figures waiting for the ferry, oil on canvas, 49cm by 77cm, gilt gesso frame £3000-5000

262 J F Harrison Dutton, portrait of a gentlemen in a wedding suit, half length, signed and dated 1920, oil on canvas, 75cm by 62cm £250-300



261



262

---

263 English School, circa 1870, portrait of a gentleman, half length, oil on canvas, 80cm by 69cm £250-300

264 A reverse-painted oval print, portrait of a woman with child, carved giltwood frame (losses), 42cm high £40-60

**FURNITURE & INTERIOR DECORATION**

265 A Regency mahogany and inlaid Pembroke table, on square taper legs, with a single drawer and a false drawer, 83cm by 50cm closed (flaps down) £150-200

266 A George IV mahogany side table, the canted square snap top with reeded edge, on a turned pillar and arched, reeded, tripartite base, 60cm wide £200-300

267 A child's farmhouse style rocking arm chair £50-70

268 An oak bible box, with slope top, carved front and later iron hinges, on an associated Queen Anne-style, single drawer stand, late 17th century, 69cm wide £150-250

---

269 A Chinese famille rose, polychrome-decorated, circular porcelain basin, externally decorated with peony and other flowers on a floral diaper base, within ornamental borders, the interior turquoise-glazed, probably early 19th century, 53cm diameter on a carved huang huali wood stand, decorated to simulated bamboo, 77.5cm high overall £600-800



<u>Lot No</u>	<u>Description</u>
270	A reproduction oak library step stool, of three rounded rectangular treads, each with moulded border, on turned and block supports, 49.5cm wide £120-180
271	A William Morris Sussex chair, with ebonised frame and rush-woven seat £200-300
272	An ethnographic carved wood paddle, probably Maori, the T-shaped handle with stylised figure decoration, 137cm long £100-150
273	A reproduction continental walnut-framed open armchair, the ladder back and twin chamfered scrolling armrests above a stuffover-upholstered seat, on turned and block supports joined by conforming stretchers, early 20th century £80-120

274 A leather circular log bucket, mounted with a plated shield-shaped plaque, engraved with a family crest and motto, probably 19th century, 40cm diameter and another, similar (2) £200-300



275 A George III oak side table, the circular snap top on a turned vase pillar and arched tripartite base, 66cm diameter £100-150

276 A set of four mahogany-framed dining chairs, in the Chippendale manner, each with a chamfered hooped back centred by a waisted, pierced and blind-carved splat, above a leather stuffover serpentine front seat with close nailing to the front legs, on square-tapering supports joined by an H-shaped stretcher, 18th century £400-600

277 A Victorian, shaped oval walnut sewing table, with decorative frieze and turned corner pendants, on two turned and carved supports, joined by a stretcher, on ceramic castors, 68.5cm wide £1200-1500

278 A Victorian mahogany firescreen, with barley twist side supports and cross struts topped with decorative finials, circa 1880, 142cm high £400-600



276



277



278

Lot No

Description

279 A Scottish pine cradle with bentwood hood, bearing an engraved brass plate inscribed, 'Crusoe's Cradle, Born at the Craggy Well, Well Brae, Largo, Fifeshire, in the year 1676', probably 19th century, 87cm long £60-80

---

280 A French walnut and gilt window seat, of bowed breakfront form, panelled frieze embellished with fluted acanthus-carved pilasters flanking a figured panel with flower heads to the corners, on a plinth base, late 19th century, 127cm wide £700-1000



281 A continental walnut-framed open armchair, with stuff-upholstered and close-nailed square back, conforming armrests and seat, fitted with a loose cushion, blind-carved armrests terminals, conforming carved apron and cabriole supports (damages) 19th century £300-500

282 A Regency faux rosewood-grained, open armchair, the shaped back panel and connecting circle arms on turned supports, above a circular stuffover seat, the upholstery close-nailed, and on sabre legs with plain brass caps and casters (damages) £200-300

283 A French walnut side chair, the moulded rectangular, arch-top back with padded, upholstered centre panel, above a conforming loose-cushioned seat, shaped apron, cabriole supports (old worm damage), late 19th century £60-80

---

284 An early Victorian walnut spoon back chaise longue, with buttoned upholstery, cabriole legs, bass and ceramic castors, 157.5cm wide £1200-1500



285 An Edwardian mahogany, marquetry and line-inlaid display cabinet, of central bowfront form, with an open shelf above a glazed and leaded door flanked by conforming panels enclosing fabric-lined shelved interior, panelled base, plain glazed and panelled sides, square section legs, 105.5cm wide £350-450

286 An Edwardian inlaid mahogany glazed display cabinet with bowed centre section, glazed sides, arched pediment and long square taper legs terminating in spade feet, 202cm high by 107cm wide £300-350

287 A Victorian figured mahogany chest, fitted with one shallow over three deep and three long graduated, cockbeaded drawers, turned wood and mother-of-pearl handles, flanked by spiral-turned side pillars, plinth base, 121.5cm wide £400-500

288 A continental carved oak dresser, the upper section with two glazed doors flanking a cupboard door, the base with two drawers above two cupboards, late 19th century, 139cm wide £150-200

289 An Edwardian oak and walnut sideboard, with raised panelled ledge back, the frieze fitted with drawers and cupboards, 140cm wide £280-350

Lot No

Description

- 290 A large oval cherrywood dining table, by Peter Hall of Staveley, on quadrupartite base, modern, 214cm long, 76cm high £1000-1500
- 291 A French rosewood bedstead, the quarter-veneered headboard and footboard flanked by fluted pillars, the headboard with carved cornice, late 19th century, 133cm wide £200-300
- 292 A George III-style mahogany breakfront four door astral glazed display cabinet, with carved top edge and rope effect carving to the bottom rail, on six claw and ball feet, 180cm wide by 43cm deep by 124cm high £300-400

- 293 A George III mahogany and inlaid chest of two over three cock beaded drawers, tramline inlay to the top, brass swan neck handles with back plates, on bracket feet, 105cm wide by 50cm deep by 103cm high £200-300



- 295 A late Victorian walnut bedroom suite with carved panels of ribbons, bows and fruit. Comprising: wardrobe with lined hanging cloaks, glazed cabinets under a broken pediment; marble top and mirror-back washstand; dressing table with centre mirror and matching pot cupboard £2000-3000
- 296 A pair of mahogany and inlaid Regency style arm chairs with open backs £150-250
- 297 A pair of mahogany Victorian salon chairs raised on four cabriole legs with original brass and wooden castors, shaped and pierced backs £150-200

- 298 A Victorian walnut ladies writing desk, in the French style, profusely inlaid with floral marquetry and with ormolu mounts, the shaped rectangular top with leather scriber, frieze drawer on angled cabriole supports, 101.5cm wide £1700-2000
- 299 A George III oak stool table, with rounded square snap top, on a composite pillar and four splayed legs, 58cm wide £600-800
- 300 A George III oak dresser, the upper breakfront section with central fielded panel door enclosing spice drawers, flanked by open plate racks, the base with rectangular top above a central drawer and cupboard, flanked by columns, each of four graduated, cockbeaded drawers, bracket feet, 187cm wide £3000-4000



298



299



300

Silverwoods 29 April 2010

Lot No

Description

301 A walnut dressing stool, with close-nailed, needlework, stuffover seat, blind-carved apron rail, on paterae-headed, turned, carved and fluted tapering circular supports, 20th century, 48cm wide £120-180

302 A beech-framed reproduction stool in the Queen Anne manner, the stuffover top with pom-pom fringe, on slender baluster and block supports joined by conforming stretchers, bun feet (old worm damage) 48.5cm wide £70-100

---

303 A walnut oval side table, in two sections, each elongated demi-lune form and on three baluster turned support and block feet joined by rectangular stretchers, partly 18th century but significantly remodelled, 140cm wide £300-500

304 An oak fold-over top octagonal credence table, with carved top rail, arches and base, original iron hinges, single drawer to frieze, partly late 17th century, 97cm wide £400-600



303



304

---

305 A mahogany and inlaid clerk's desk, the hinged folding slope enclosing pigeon holes, one narrow frieze drawer above a box base enclosed by a fall flap, wood handles, ivory escutcheons, square section supports with shaped terminals, probably late George III, 75cm wide £500-700

306 A George III walnut candle stand, the octagonal top on a turned pillar and tripod base, 65.5cm high £100-150

307 A reproduction Italian inlaid games table, with removable double sided gaming top, enclosing a roulette wheel and numerous other games, modern, 78cm wide £150-200

---

308 A continental carved and gessoed wood figure of a blackamoor, polychrome-decorated and gilt, holding a tray in his left hand and a torch in his right, glass shade, fitted for electricity, early 20th century, 217cm overall. Note: Believed purchased from Harrods, circa 1910 £1800-2200

309 A three-seater French gilt sofa with carved decorative seat arms and lower chased rail. Musical Instrument embellishment to the top rail, recently re-upholstered, stands on five tapering turned legs, 190cms wide £1000-1500

Lot No

Description

- 310 A French style, three-piece parlour suite, with upholstered carved gilt gesso show frames, comprising three-seater settee and pair of side chairs, 20th century £1400-1800



308



309



310

- 311 An early Victorian mahogany library table, the plain rectangular top above a plain frieze with turned corner pendants, on two turned and carved end supports, arched scroll supports joined by a turned stretcher, white ceramic castors, 122cm wide £800-1200

- 312 A set of four Copeland large tiles, polychrome-painted with figural scenes, depicting the seasons, monogrammed SH to the reverse (possibly for Shrigley and Hunt), circa 1880, each 61.5cm by 31cm (one A/F) £1000-1500

- 313 A Victorian floral marquetry and line-inlaid display cabinet, the upper section of a glazed, serpentine archform, above a pair of doors enclosing shelves, the lower section similarly fitted, scrolling supports, 109cm wide £1400-1800



- 314 An Edwardian mahogany four door glazed and silk lined display cabinet by Warings, the central flat two door portion flanked by bowed end cabinets, with ogee moulded cornice above, the base similarly styled, on six octagonal tapered legs, circa 1900, 183cm wide by 48cm deep by 207cm high £1500-2000

- 315 A George III oak tack cupboard, the three door, fielded panel top over a 'dog kennel' style base with central cabinet flanked by two banks of two drawers, with false single drawers above, on bracket feet, furnished throughout with brass swan neck handles and 'H' hinges, 188cm wide by 55cm deep by 210 cm high £1000-1500

Lot No

Description

316

An early Victorian oak, crossbanded and line-inlaid linen press, the upper section with moulded cornice above two doors enclosing adjustable shelves, the base of two short over three long graduated, cockbeaded drawers, turned handles, turned feet, 123cm wide £350-450







Lot 314



Lot 315