



Silverwoods
of Clitheroe

Antiques Auctioneers of distinction and quality

SEPTEMBER SALE

On
Thursday 30th September 2010
at 10.00am

at the Silverwoods Auction Room
Clitheroe Auction Mart
Lincoln Way
Clitheroe, Lancashire, BB7 1QD

Viewing Times

Tuesday 28th 4.00pm – 6.30pm

Wednesday 29th 10am – 2pm

Thursday 30th from 8.30am to start of sale

Or by appointment

Sale Starts at 10am

Tel:- 01200 423322 Fax:- 01200 429263

Buyers Premium – 17.63% (including VAT)

Entries are invited on every Monday between
9am – 12 noon

Other times available by appointment

Please contact Wilf Mould

--

Lot No Description
Collectable Ceramics

- 1 A Beswick pottery Beatrix Pottery figure, 'Mr Benjamin Bunny' gold backstamp and another 'Flopsy' 'Mopsy' and 'Cottontail', brown backstamp (2) £20-30
- 2 A Beswick pottery Beatrix Potter figure, Jemima Puddleduck and another, Hunca Munca, both brown backstamps (2) £10-20
- 3 Beswick pottery, No 1956, Labrador (golden brown, gloss) and No 1754, Cocker Spaniel (black and white, matt) and (liver and white, gloss) (3) £40-60
- 4 Beswick pottery, Small Barn Owl, Grey Wagtail, Blue Tit, Goldfinch, Goldcrest and Chaffinch (6) £40-60
- 5 Beswick pottery, No 1452A, Sow ch. 'Wall Queen 40th'; No 1453A, Boar ch. 'Wall Champion Boy 53rd'; No 310, Fox standing (gloss) and Brown Foal, facing right (4) £30-50
- 6 Beswick pottery, No 1345, Jersey Cow ch. 'Newton Tinkle' (gloss) and another, similar model (2) £50-80
- 7 Beswick pottery, No 1248A, Guernsey Cow (gloss, first version) £70-100
- 7A Beswick pottery, No 1248A, Guernsey Cow (gloss, first version) (A/F) £40-60
- 8 Beswick pottery, No 1451, Guernsey Bull ch. 'Sabrina's Sir Richmond 14th' (gloss) £60-80

- Lot No Description
- 9 Beswick pottery, No 1454B, Ayrshire Bull ch. 'Whitehill Mandate' (gloss, second version) £100-150



- 10 Beswick pottery No 818, Grey Shire Mare, in harness with dray £40-60
- 11 Beswick pottery, No 953, Mare and Foal (second version, gloss) £40-60
- 12 Beswick pottery, No 975, Canterng Shire (brown, matt); No 1772, Thoroughbred Stallion and No 2421, The Winner (3) £50-80
- 13 Beswick pottery, seven various models including No 1748, Fox seated (gloss); No 2263, Foxhound; No 2264, Foxhound and No 1140 Fox standing (7) £50-80
- 14 Beswick pottery, No 2348, 'Fireside Fox' £40-50
- 15 A Booths, 'Real Olde Willow' pattern, twenty-five piece part teaset; a similar coffee can and saucer, and a soup bowl and two stands (30) £30-50
- 16 A Davenport blue and white oval tureen stand, 39.5cm wide; two Doulton flow blue plates, and three miniature blue and white plates (6) £20-35

- | <u>Lot No</u> | <u>Description</u> |
|---------------|--|
| 17 | Eight items of Victorian blue and white transfer-printed pottery, including Ponte Roto, The Shield, Fairy Villa and Italian Scenery patterns £40-50 |
| 18 | Booths, 'British Scenery' pattern, two jugs and three egg cups and a Mintons, willow pattern moon flask (6) £25-35 |
| 19 | Three Victorian blue and white transfer-printed jugs, the largest 17cm high, and a B & BL, Opaque Ware, reverse-decorated jug (4) £20-35 |
| 20 | Four various Victorian character jugs and two porcelain fairings (6) £30-40 |
| 21 | A Victorian Staffordshire flatback spill holder, depicting a farmyard scene, 25cm high and a Staffordshire cottage money box, 11.5cm high (2) £30-40 |
| 22 | A Victorian Staffordshire, glazed pottery figure of a gentleman taking snuff, removable tricorn hat, 33cm high £80-120 |



22

- | | |
|----|--|
| 23 | A Victorian Minton majolica, ivy leaf-decorated circular planter, 20cm high £60-80 |
|----|--|

- | <u>Lot No</u> | <u>Description</u> |
|---------------|---|
| 24 | A pair of Mintons brown-glazed 'Three Monkeys' candlesticks (A/F), 22cm high £25-35 |
| 25 | Nine various Prattware circular plates, in sizes, all with scenes, some titled (9) £40-60 |
| 26 | A Charlotte Rhead for Crown Ducal terragona charger, 31.7cm diameter £90-100 |

26



- | | |
|----|--|
| 27 | Three various Denby vases, the largest 31.5cm high £50-70 |
| 28 | A Bretby pottery, monkey and bamboo umbrella stand, No 121 to underside, 58cm high £60-100 |



28

- | <u>Lot No</u> | <u>Description</u> |
|---------------|--|
| 29 | Lladro porcelain, No B-15 J, Rabbit with log, 7.5cm high and another, similar, No F-17D (2) £30-50 |
| 30 | Nao porcelain, four various figurines, including girl in peasant dress carrying a lamb, 25.5cm high (4) £40-60 |
| 31 | A Goebel pottery wall mask, as a lady's head, 22cm high and another, Austrian example, 22cm high (2) £30-40 |
| 32 | A Longwy pottery jug, of disc shape on a flared foot with a tubular neck and double strand 'rope' handle, decorated in polychrome enamels with flowers and foliage over a puce ground, impressed marks and incised numeral D792, 28.5cm high £80-120 |



32

- | | |
|----|---|
| 33 | A Vienna white-glazed porcelain model of a desert fox, 15.5cm high and a similar sparrow, 9.5cm long (2) £35-45 |
| 34 | Three Goebel pottery figures, the largest 10cm high £15-25 |

- | <u>Lot No</u> | <u>Description</u> |
|---------------|--|
| 35 | A pair of Choisy French creamware plates, transfer-printed and painted with subjects after Vernet, mid-19 th century, 21.5cm diameter £20-35 |
| 35A | A French faience plate, polychrome-decorated, centrally with a deer in a landscape, inscribed 'Etienne Leserf' and dated 1773, ornamental border, 23.5cm wide £70-100 |
| 36 | Five items of Royal Copenhagen blue and white-decorated porcelain, comprising a soup plate, 21.6cm diameter; a ribbon plate, 23.3cm diameter; two shallow bowls, 20.4cm diameter and a three-section nut dish, 23cm wide and a similar pottery toast rack (6) £30-50 |
| 37 | A Meissen porcelain figure of a putto, dressed as a judge, holding bags of money, 19 th century, 11cm high £30-40 |




37

- | | |
|----|--|
| 38 | A German porcelain-cased mantel clock, relief-moulded and painted with figures and flowers, circa 1960, 33cm high £40-70 |
| 39 | A Ridgways or Coalport, eleven-piece dessert service, decorated with views, apple green and gilt borders £70-120 |

- | <u>Lot No</u> | <u>Description</u> |
|---------------|--|
| 40 | A Border Fine Arts, No A2016, 'Arab Stallion', limited edition No 313/950, signed 'Ann Wall' £250-300 |
| 41 | A Border Fine Arts, No B0745, 'The Fortune Teller', limited edition No 261/300, signed 'Ken Ayres', circa 2002, boxed £700-900 |
| 41 |  |
| 42 | Thirteen pairs of Wedgwood jasperware, American Bicentennial plates, 13cm diameter, original boxes £30-50 |
| 43 | Four Wedgwood jasperware plates and an Aynsley, Royal Wedding commemorative plate, all in original boxes (4) £20-30 |
| 44 | A 1977 Wedgwood, Royal Silver Wedding tankard, by Richard Guyatt (chipped), original box £10-20 |
| 45 | A pair of limited edition, Royal Doulton, black basalt busts, depicting Queen Elizabeth II and the Duke of Edinburgh, commemorating the silver wedding, No 446/750, original box £80-120 |
| 46 | A Royal Doulton, limited edition, black basalt bust of HRH Princess Anne, commemorating her marriage to Captain Mark Phillips, No 446/750, original box £40-50 |

- | <u>Lot No</u> | <u>Description</u> |
|---------------|---|
| 47 | A Caughley plate, blue and white decorated with the Weir pattern, circa 1785, 20.7cm diameter £200-300 |
| 48 | A Royal Crown Derby plate, painted in coloured enamels by W.E.J. Dean, with a thatched cottage by a river, the green border with gilt bands, date-coded for 1937, 23cm diameter £60-100 |



- | | |
|----|---|
| 48 |  |
| 49 | Clarice Cliff: a floral-decorated, baluster table lamp, 19.5cm excluding fitting; a crocus pattern saucer and two water lily-decorated sugar basins, different (4) £40-60 |
| 50 | A Clarice Cliff Bizarre fruit bowl, 22.5cm diameter £60-80 |
| 51 | A Moorcroft jug, decorated with the leaf and berry pattern, 20.5cm high £200-250 |



51

- | <u>Lot No</u> | <u>Description</u> |
|---------------|--|
| 52 | A Moorcroft circular jar and cover, decorated with anemones on an ivory ground, 9.5cm high £40-50 |
| 53 | A Moorcroft circular plate, decorated with clematis on a green ground, 18.5cm diameter £40-60 |
| 54 | A Moorcroft baluster vase, decorated with hibiscus on a green ground, 9.5cm high £30-50 |
| 55 | A Moorcroft narrow neck vase, decorated with hibiscus on a blue ground, 21.5cm high £70-100 |
| 56 | A Walter Moorcroft table lamp, decorated with a hibiscus pattern ball, on silvered resin mounts, 46cm high £60-100 |



56

- | | |
|----|--|
| 57 | A Moorcroft, anemone pattern, baluster table lamp, fitted for electricity, fabric shade £100-150 |
| 58 | A Wedgwood moonstone, white-glazed, Sandeman pottery decanter, 26cm high £10-20 |

- | <u>Lot No</u> | <u>Description</u> |
|---------------|--|
| 59 | A Doulton Slaters, tall circular section vase, decorated with chrysanthemums (A/F), 34cm high £20-35 |
| 60 | Royal Doulton circular plate, D6572, 'Bootmaker from Williamsburg', and another, D6439, 'Athos' (2) £25-35 |
| 61 | A Royal Doulton series ware, large circular plant holder, transfer printed in the round, with The Jackdaw of Rheims, pattern No D2538 to the underside, 33cm diameter £100-150 |

61



- | | |
|----|---|
| 62 | A pair of Royal Doulton cabinet plates, relief-moulded, gilt and floral-decorated by P. Curnock, 22.5cm diameter £40-60 |
| 63 | A Denby 'Electric Blue' baluster vase, 26cm high, and a similar flared vase, 20cm high (2) £35-50 |
| 64 | A small collection of Japanese Satsuma pottery, comprising; square box and cover, 7.6cm wide; circular box and cover, 9.2cm diameter; koro and cover, 10.5cm high; two others, 5.2cm and 4.8cm; two pairs of baluster vases, 6cm and another single vase, 4.5cm (10) £100-150 |

Lot No Description
 65 A Masons Ironstone plaque, decorated in the Chinese style, 32cm diameter; a Bloor Derby muffin dish and cover, decorated in the Imari palette, 20.3cm diameter and three items of Chinese Imari porcelain, various (5) £30-40

66 Four items of Canton porcelain, comprising a circular section vase, decorated with figures and interiors, 25cm; another similar, 20cm and two circular section teapots, one with cover, all late 19th century (4) £80-120

67 A Kutani, seven-piece dressing table set, including a circular tray, 38cm diameter, lidded jars, candlestick, etc., early 20th century £60-80

68 A Will Young, 'Widecombe Fair', comical pottery group, rectangular base, inscribed signature and inscription to underside (damages) 28cm wide £40-70

68



69 A Sampson, Bridgwood & Son, Staffordshire, pottery jug, white-glazed, gilt-lined and transfer-printed with a record of 'Prizes Won by the Black Dyke Mills Band from 1856 to 1882', late 19th century, 24cm high £100-150

Lot No Description
 70 A Victorian pearlware, large two-handled loving cup, transfer-printed and painted with scenes in the round (A/F), 20.5cm high £15-25



70

71 A pair of Birks, Rawlins and Co., Persindo Porcelain, polychrome enamel-decorated, tapering porcelain vases, bearing mark 266/36, early 20th century, 20cm high £30-40

72 A baluster vase, lustre-decorated with animals in a landscape, signed Bernard Moore, 14cm high £100-150



72

73 A Denby pottery circular dish, decorated with a foliage design by Glynn Colledge, signed to the underside, 28.5cm diameter £50-80

74 A Royal Crown Derby, porcelain owl, date coded for 1968, boxed £50-70

Lot No Description
 75 Royal Crown Derby teawares, pattern No 1126, comprising two cake plates, 23cm diameter; three tea cups and three saucers (8) £60-100

76 Royal Crown Derby teawares, pattern No 4591, comprising cake plate; six side plates; six cups; six saucers; cream jug and slops basin (cracked) variously date-coded for 1909, 1911 and 1939 (21) £150-200



76

77 A Royal Crown Derby miniature baluster vase, pattern No 6299N, 3.5cm high and a Stevenson & Hancock, Derby, octagonal cabinet cup and saucer (3) £30-40

78 A pair of Crown Devon, two-handled, ovoid vases, gilt and polychrome-decorated by George Cox with Highland Cattle scenes, 26cm high £70-100



78

79 A Coalport, thirteen-piece part tea service, hand-painted with floral sprays, circa 1835 £40-60

Lot No Description
 80 A pair of Thomas Forester, Phoenix Works, two-handled vases, decorated with cranes (one A/F), 33cm high £20-35



80

81 A Pointons, two-handled vase, decorated with apples and foliage, 27cm high £50-80

82 A Coalport vase, relief-decorated and gilt with foliage and a bird on an ivory ground, No B2477 to the underside, 19cm high £50-80

83 A Meissen porcelain dish, relief-decorated and gilt on a white ground, 28cm diameter £35-45

84 A Turn, Vienna, Art Nouveau circular bowl, with green lustrous interior and triform-arched handle, 14.5cm high £40-60

- Lot No Description
- 85 A pair of Austrian porcelain, narrow neck vases, with poppy-decorated baluster bases, marked Turn, Wien, impressed numeral 5052/28 to undersides, 37cm high £100-150



85

- 86 An Art Deco chromed table lamp, with white glass shade, mounted with a pottery group of a lady with a Scottie dog, 50.5cm overall £30-50
- 87 A Katzhutte porcelain figure, of a lady with fan, circa 1930, 52cm high £250-350



87

- 88 An Art Deco figurine, of a girl with ball, 25cm high; an Art Deco figurine, of a dancer, 21cm high and a Royal Dux figurine, of a woman in a blue dress, 24cm high (3) £50-80
- 89 A pair of continental white-glazed porcelain, figural candelabrum,

- Lot No Description
- heavily- decorated with flower buds and foliage (one A/F), late 19th century, 57cm high £100-150
- 89A A Japanese Fukagawa, porcelain baluster vase, decorated carp and prunus branches, late 19th century, 32cm high £400-600



89A

Glass

- 90 A Venetian opalescent glass chandelier, the baluster column surmounted by a corona (cracked), above an inner band of four alternating pairs of flower stems and leaves, and an outer band of six scrolling candle branches interspaced by leaves (one lacking), ball suspension, 20th century, 80cm high overall £150-200
- 91 A part suite of Stuart crystal, fern-engraved stem glassware, comprising: six white wine glasses; six red wine glasses and six lager glasses (8) £25-40

- Lot No Description
- 92 Four items of moulded glass, including a goblet; a Davidson lidded butter dish; a smoky glass centrepiece spreader and a blue glass centrepiece (6) £30-40
- 93 Nine items, smoky glass dressing table wares £20-30
- 94 Two brown smoky glass flower centrepieces, each with a flower spreader, one on a stand £25-35
- 95 A garniture of three Victorian enamelled glass vases, one with a cover, the largest 53cm high £30-50



95

- 96 A Wedgwood, limited edition, jasper cameo-mounted, hand-cut glass goblet, commemorating Princess Anne's marriage to Captain Mark Philips, No 35/500, original box £30-40
- 96A A Wedgwood, limited edition, jasper cameo-mounted, hand-cut glass goblet, commemorating the centenary of the birth of Sir Winston Churchill, No 275/1000, original box £30-40

- Lot No Description
- 96B A Wedgwood, limited edition, jasper cameo-mounted, hand-cut glass goblet, commemorating the 250th anniversary of the birth of George Stubbs, No 296/500, original box £25-30
- 97 A pair of Victorian wavy edge and hobnail turquoise glass baskets, with applied clear peach coloured glass handles, 20.5cm wide £15-25

97



- 98 A Bohemian glass tumbler, wheel-engraved with a scene of a stag in a forest landscape, late 19th century, 10.1cm high £40-60
- 99 A pair of gilt-decorated milky glass vases, late 19th century, 24cm high £20-30
- 100 An Art Deco green glass vase, of cornucopia form, on a circular base, 38.5cm high £30-50
- 101 Mdina glass: a studio vase, 13.5cm high and a rose planter, 13cm diameter (2) £25-30
- 102 Mdina glass: a sea horse desk weight, 14cm high; a globe desk weight, 8cm high and a small vase, 9.5cm high (3) £35-45
- 103 Mdina glass: a studio globe-shaped vase, 14.3cm high £25-30

- | <u>Lot No</u> | <u>Description</u> |
|---------------|--|
| 104 | Baccarat glass: a swirl-moulded circular candle holder, 8cm high, and an octagonal tea light holder, 6.6cm wide (2) £20-30 |
| 105 | A heavy, flared top cut glass vase, 36cm high £15-20 |
| 106 | A cut glass mushroom shape table lamp, 32cm high £40-50 |
| 107 | A Venetian glass garniture, comprising a ruby glass, hand-painted and gilded lidded jar, 33cm high and a pair of similar goblets, 18.5cm high (3) £30-50 |



107

- | | |
|-----|---|
| 108 | Five various items, Whitefriars glass £50-70 |
| 109 | A set of six Binini green and white mermaid stem liqueur glasses, by Fritz Lampl £40-60 |

- | <u>Lot No</u> | <u>Description</u> |
|---------------|---|
| 112 | A cased set of twenty-four, mother of pearl-handled forks and knives, for twelve places £40-60 |
| 113 | A Victorian oak tantalus, with plated mounts, fitted with three square section decanters with faceted ball stoppers, 36.5cm wide £50-70 |
| 114 | An oak and white metal-bound combination three-decanter tantalus and games box, enclosed by twin folding flaps, internally sub-divided for playing cards and pieces, a games drawer to the base, early 20 th century, 38.5cm wide £180-250 |

114



Boxes, Caddies, Canteens & Tantalus

- | | |
|-----|---|
| 110 | A George III-style, mahogany, two-division tea caddy of sarcophagus form, 24.2cm wide £50-70 |
| 111 | A mahogany sloping knee desk, internally with a pair of glass inkwells, pen holder and stationery compartments, a full width drawer to the base, brass carrying handles, early 19 th century, 45cm wide £120-150 |

- Lot No Description
- 115 A mahogany-cased tantalus/smoker's cabinet, fitted with drawers and shelves and containing three cut glass decanters and stoppers, six glasses, a full width plated tray, two small salvers and a stoneware tobacco jar, 45.5cm wide, closed £400-600

115



- 116 An Edwardian walnut stationery box, internal with inkwells and perpetual calendar, base drawer, 40cm wide £120-150

116



- 117 A George III rosewood and boxwood-lined sarcophagus tea caddy, internally with two lidded divisions, brass handles, bun feet, 19cm wide £50-70

Lot No Description

NO LOT 118

- 119 A Chinese carved wood box, decorated with flowerheads and foliage, the lid and sides pierced and paper-backed, early 20th century, 34cm wide £20-35
- 120 A leather worker's mahogany box, with fitted internal compartments, late 19th century, 25cm wide and a Victorian rosewood work box, 30.5cm wide (2) £50-70
- 121 A surgeon's mahogany-cased travelling set, containing scalpels, probes, scissors etc., some items marked, 'Maw & Sons', the case 19cm wide £30-40
- 122 George III figured mahogany candle box, 51.5cm high £160-200

Bygones, Collectables & Decorative Items

- 123 A cased German violin, with two bows, late 19th century £200-250



123

- 124 A brass-cased, three-sided, oil-fired lantern, bearing label for Bulpitt and Sons Ltd., Birmingham 1916, 39cm high £60-100

Lot No Description

- 125 A copper and brass, four-sided, oil-fired stable lantern, 38cm high
£50-80



125

- 126 A Victorian brass and onyx base oil lamp, with cranberry glass reservoir and original handpainted glass shade, 71cm high overall £110-130



126

- 127 A Victorian brass base oil lamp, with cranberry glass reservoir and etched glass shade, 68.5cm high overall
£60-90

Lot No Description

- 128 A Victorian cast iron base table lamp, blue glass font, etched globe shade, 60cm high overall £40-60

- 129 A Victorian brass-based oil lamp, with handpainted glass reservoir and later glass globe shade £40-60



129

- 130 A cast brass desk stand, incorporating a lidded inkwell with a glass liner, 25cm wide £25-35

- 131 A brass toffee melting pan and a brass pestle and mortar (3) £20-30

- 132 A late Victorian bronze-effect, lion head door knocker, 21.5cm high overall £20-30

- 133 Three cast brass supports, in the form of winged cherubs, 19.5cm high £20-30

- 134 A cast iron coffee grinder, early 20th century and a selection of mainly metal curios £30-40

- | <u>Lot No</u> | <u>Description</u> |
|---------------|--|
| 135 | A pair of Victorian, heavy brass, ecclesiastical wall light fittings, converted from gas to electricity, the backplates 52cm high £50-70 |
| 136 | A pair of brass two-branch wall light brackets, 40cm high £120-150 |
| 137 | A Victorian mahogany and brass arch top tally board, 32.5cm and a Victorian cast iron hand press (2) £30-50 |
| 138 | A pair of cast iron Punch and Judy door stops, 22cm high, and a cast iron Mr Punch doorstep, 31cm high (3) £30-40 |

NO LOT 139

- | | |
|-----|---|
| 140 | A Hardy, 'Album', bakelite, circular line case; a 4in, brass platewind salmon fly reel, horn handle (faceplate slightly buckled) and an Allcock, 4in, walnut and brass starback reel (3) £50-70 |
| 141 | A bamboo and silver-mounted walking cane, and a horn-handled, silver-mounted walking stick, engraved inscription, both early 20 th century (2) £30-50 |
| 142 | Three walking sticks, two with silver mounts £30-50 |
| 143 | A horn-tipped, shark's vertebrae, flexible walking cane, 89cm long £20-35 |



143

- | <u>Lot No</u> | <u>Description</u> |
|---------------|---|
| 144 | A bottle of 'Arfika Korps' lost liquor whisky, with souvenir booklet £25-40 |
| 145 | A Chinese cinnabar lacquer tray, of waisted rectangular form, decorated with figures in a landscape (damages and restoration), 37.2cm wide £40-60 |

145



- | | |
|-----|--|
| 146 | A Zeiss Ikon brass monocular microscope, No 52096, four objectives, wooden case £30-50 |
| 147 | A Gurkha Kukri, with two small knives, leather scabbard £30-50 |
| 148 | A Gurkha Kukri, with two small knives, leather scabbard £30-50 |
| 149 | A German mantel clock, striking on a gong, in stained beech architectural case surmounted by finials, late 19 th century, 40cm high £80-100 |



149

- Lot No Description
- 150 An oak-cased, presentation grandmother clock, dated 1937, 140cm high £60-80
- 151 A carved wooden Congolese tribal figure, of a man beating a drum, bears label, early 20th century, 39.5cm high £20-30



151

- 152 A Lillian Rowles baby picture, glass easel frame £15-25
- 153 A plated metal equestrian model of a horse and jockey jumping a fence, on an onyx plinth, late 19th century, 28cm wide overall £50-80
- 154 A Pathescope 'Kid' vintage film projector, complete with a generator and eight 'Baby' film reels £40-60
- 155 A Zeiss Ikon, Ikonta 520/2, fold-up 1930's camera, in a contemporary Art Deco bakelite carrying case £50-80

- Lot No Description
- 156 A Victorian stained beech napkin press, of conventional form, the base fitted with a drawer, turned wood handles, 66cm wide £150-200



156


- 157 A WWII Lancaster Bomber compass; an ammunition case and a strongbox (3) £60-80

Postcards, Collectable Cards & Stamps

- 158 A large collection of cigarette and tea cards, some full sets, and a Players album of cigarette pictures £50-70
- 159 A collection of approximately 200 postcards, in an album and loose, including real photo, humorous, greetings, topographical etc., mostly early 20th century £60-80
- 160 An album of one hundred postcards and photographs, early 20th century; an album of ninety-three postcards, early 20th century and a small collection of Players cigarette cards £40-60

NO LOT 161

- 162 An album of approximately one hundred and forty postcards, early 20th century and an album of one hundred and eight similar postcards (2) £40-60

| <u>Lot No</u> | <u>Description</u> | <u>Lot No</u> | <u>Description</u> |
|---------------|--|---------------|---|
| 163 | A collection of eight Raphael Tuck's, The Queen's Dolls' House postcards, in original envelopes £20-30 | 170 | Four albums containing a large assortment of First Day covers, presentation packs, mint sets etc., mostly GB £70-100 |
| 164 | A collection of cigarette and trade cards, some in penny albums and a quantity of postage stamps and other ephemera £30-50 | 171 | A collection of GB stamps, mixed commemoratives and definitives, Victoria to QEII, plastic album £40-60 |
| 165 | An album of approximately 360 postcards, including art history, greetings, etc., and a small collection of stamps and First Day covers £30-50 | 172 | Great Britons, Medallion First Day covers, plastic album £8-12 |
| |  | 173 | A Leuchtturm album and a stock book, containing a collection of GB, mostly mint strips, blocks and gutter pairs £70-100 |
| | 165 | 174 | Two stock books, containing a collection of GB and Ciskei mint stamps, including gutter pairs and strips £100-150 |
| 166 | An album of World stamps and GB First Day covers, late 20 th century £25-35 | 175 | Two stock books, containing a collection of mint GB definitives and commemoratives £50-70 |
| 167 | A World Wildlife Fund Conservation stamp collection, comprising First Day covers and cards and mint sets, in a plastic album and an album of GB presentation packs and booklets (2) £30-50 | 176 | A Royal Mail Special Stamps 1987 booklet with slip cover, and four stock books containing mainly GB mint stamps £50-70 |
| 168 | Three albums of China First Day covers and mint stamps £30-50 | 177 | A stock book, containing a collection of GB mint definitives and a small selection of loose mint stamps £20-30 |
| 169 | Four plastic albums containing a large assortment of GB and World First Day covers and presentation packs, many with accompanying coins and medallions £150-200 | 178 | A collection of mint and used Rhodesia and RSA in two stock books and loose £30-50 |
| | | 179 | A collection of GB mint stamp booklets and assorted GB, RSA, Rhodesia and Ciskei in boxes and stock books £60-100 |
| | | | NO LOT 180 |

Lot No Description
Costume Jewellery, Miniatures & Ivory

- 181 A box of curios, including silver jewellery, etc. £20-30
- 182 Three various costume bags and a gilt metal compact (4) £15-25
- 183 A tray of twenty-six vintage brooches £20-30
- 184 A Whitby jet necklace and a Victorian mourning pin (2) £35-45



184

- 185 Assorted costume jewellery, including a Victorian locket pendant; foil beads etc. £15-25
- 186 A jewellery box of assorted costume jewellery £20-30
- 187 Assorted silver and costume jewellery £40-60
- 188 A Victorian black paper mache and abalone shell-inlaid spectacles case, 17cm wide £20-30
- 189 A Victorian gilt metal book-type needle case; a 1930's fountain pen and propelling pencil set and a set of Wills's cigarette cards (3) £10-20

- Lot No Description
- 190 A Chinese carved and reticulated ivory pedestal, of circular section, decorated with coiled dragons, late 19th century, 7.8cm high £30-50
 - 191 A Japanese ivory okimono, as a flower vendor with baskets of flowers, he holding a pair of secateurs, late 19th century, 14cm high £150-200

191



- 192 A Japanese ivory okimono, as a woodcutter, leaning on an axe, holding a bundle of faggots, circular base, late 19th century, 15.5cm high and another, as a Geisha, 15cm high (2) £100-150
- 193 An oval portrait miniature on ivory, of a woman in a blue shawl and hat, after Gainsborough, ivory-veneered frame £50-100



193

Lot No Description

- 194 A framed oval portrait miniature on ivory, depicting an Irish gentleman, 7cm high £120-150



194

- 195 A French portrait miniature of a lady in a blue dress, bust length, tondo, 7.5cm diameter, polished wood frame £120-150

- 196 A French portrait miniature on ivory, of a lady in a red dress and veil, bears signature, possibly Rosil, 8cm high, filigree brass frame £120-150

- 197 A French portrait miniature on ivory, possibly Empress Josephine, half length, bears signature, possibly Dumant, 10cm high, gilt brass frame £120-150



197

Lot No Description

Silver Plated Ware & Silver

- 198 An Edwardian silver-plated, ovoid breakfast warmer with revolving cover, on four cast lion's mask and paw feet, 30cm wide £60-80

- 199 A Victorian, silver-plated, 'Palm Tree' table centrepiece, stamped with maker's mark, 28cm high £40-50




199

- 200 A WMF, plated, two-handled pedestal bowl, with green glass liner, 24cm high £150-200

- 201 A pair of chased silver napkin rings, and a single silver napkin ring (3) £40-50

- 202 A cut crystal sugar caster, of shaped square section, silver cover, Birmingham 1937; a silver-mounted, cut glass scent bottle and stopper, Chester 1905 (glass A/F) a pair of silver dwarf candlesticks (loaded), Birmingham 1908; a continental silver-mounted glass salt, as a swan and thee other items (6) £60-100

| <u>Lot No</u> | <u>Description</u> | <u>Lot No</u> | <u>Description</u> |
|---------------|--|---------------|--|
| 203 | Assorted silverwares, including rectangular pin dish, on four cabriole legs, Birmingham 1922, 10.2cm wide; circular tea strainer and holder, Birmingham, 1928; shell butter dish, Sheffield 1903 etc. £100-150 | 210 | A silver capstan inkwell (loaded), marks rubbed and an Art Deco, two-handled, small circular pedestal dish, Birmingham 1936 (2) £40-60 |
| 204 | A composite silver, three-piece dressing table set, chased with flowers and leaves, Birmingham 1917 and 1959 (3) £25-35 | 211 | A silver cigarette box, of rectangular form, engine-engraved, boxwood interior, Sheffield 1961, 11.5cm wide and a circular lidded box (damages), Birmingham 1911, 11.8cm diameter (2) £50-80 |
| 205 | Eight various silver sporting trophies, plinth bases and an American sterling silver circular dish, 25.5cm diameter (9) £80-100 | 212 | A silver sauceboat, moulded edge, three stepped hoof feet, Birmingham 1930 (3.4oz) £25-40 |
| 206 | A silver, three-piece, Art Deco coffee service, by Mappin & Webb, comprising coffee pot, milk jug and sugar bowl, Birmingham, 1933-34, (31.3oz) £250-300 | 213 | A three-piece silver condiment set, blue glass liners, Sheffield 1898 with associated spoon, London 1899 and shaped rectangular tray, Birmingham 1919 £70-100 |
| 206 | | 214 | A silver shell-shaped caddy spoon, with monogrammed handle (marks worn) £50-60 |
| |  | 215 | A pair of silver grape scissors, London 1973 £100-150 |
| 207 | An Art Deco silver, two-handled tray, by Mappin & Webb, Sheffield 1934 (32oz) £250-300 | 216 | A pair of George III silver sugar nips, made by Francis Page (no date) £15-20 |
| 208 | A silver large pedestal sauceboat, foliate-capped scroll handle, oval stepped base, Sheffield 1934 (5.7oz) £40-60 | 217 | A silver cream jug, of semi-fluted circular form (marks rubbed) (2.2oz) £20-25 |
| 209 | A sterling silver model of a seated teddy bear, 5.5cm high £15-20 | 218 | A silver, shaped circular salver, gadrooned edge, three claw and ball feet, Sheffield 1954 (15.3oz) £120-150 |
| | | 219 | A matched silver, four-piece tea service, of semi-fluted oval form, the teapot and hot water jug with ebony handle and finial, Sheffield 1896, 1899 and 1915 (32oz) £250-300 |

- | <u>Lot No</u> | <u>Description</u> |
|---------------|---|
| 220 | A set of six silver gilt and enamel bean top teaspoons, Birmingham 1982, cased £30-50 |
| 221 | A silver, two-handled, circular section golf trophy, engraved inscription, Sheffield 1919 (4.1oz), ebonised base £35-45 |
| 222 | A silver, shaped rectangular photograph frame, with strut support, Sheffield 1993, 24.5cm high £50-70 |
| 223 | A silver, seven-piece condiment set, of circular baluster form, on three shell-capped, webbed feet, Chester 1907, with five associated spoons (one plated), in a fitted case £100-150 |

223



- | | |
|-----|---|
| 224 | A two-handled, oval bowl, gilt interior, initialled, Birmingham 1901 (4oz) £35-45 |
| 225 | A silver, circular section milk jug, initialled and engraved with leaves, Birmingham 1910 (3.4oz) £30-40 |
| 226 | A silver-plated, large pocket watch, in a fitted, silver mounted bedside case, strut support, Birmingham 1923, 11.8cm high £40-60 |

- | <u>Lot No</u> | <u>Description</u> |
|---------------|---|
| 227 | A silver tea strainer and bowl, Birmingham 1973 £40-60 |
| 228 | A silver, lidded, D-shaped trinket box, with chased silver decoration after Joshua Reynolds, Chester import marks, 15.5cm wide £180-220 |

Curios, Medals & Jewellery

- | | |
|-----|---|
| 229 | A Bergmann-style, enamelled alloy table lighter, as a carpet seller on a camel, rectangular vitriolite base, 14.7cm wide £30-50 |
|-----|---|

229



- | | |
|-----|---|
| 230 | An articulated metal fish, 18.5cm long; a plated cockerel head vesta case; a Lucifer head vesta case and a small articulated silver fish pendant (4) £30-40 |
| 231 | A brass-cased large carriage clock, folding handle, 14.2cm high overall £40-60 |
| 232 | A pair of Great War medals, inscribed 61406 Pte. W. Aldersley, Middx. R. £25-35 |
| 233 | A double-sided photo pendant, early 20 th century and twenty-nine military buttons £25-35 |

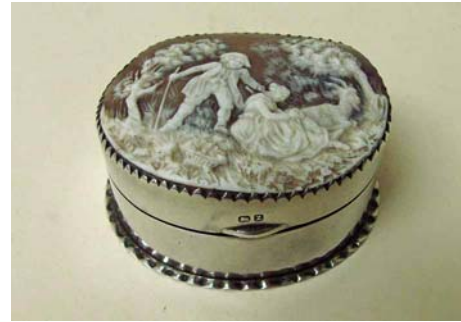
- | <u>Lot No</u> | <u>Description</u> |
|---------------|---|
| 234 | A selection of twenty-one assorted military badges and a quantity of military buttons £20-30 |
| 235 | Two silver-gilt Masonic jewels, "Installation of DGM, Delhi 1903", Birmingham 1905 and "Steward, Royal Masonic Institution for Boys 1917", London 1896 with related apron and election certificates dated 1870 and 1900 £60-100 |
| 236 | A pair of amber and meerschaum cigarette and cheroot holders, cased £30-40 |
| 237 | A pair of paste-set six stone earrings £20-30 |
| 238 | Two silver vesta cases, Birmingham 1902 and 1903 £30-40 |
| 239 | Three silver bracelets; a set of silver earrings and a ladies fob watch £15-20 |
| 240 | Nine silver neck chains with pendants £20-25 |
| 241 | A 9ct gold, Chinese character pendant and neckchain; a 9ct white gold and zircon pendant; a 9ct gold and silver ring and assorted silver jewellery £20-35 |
| 242 | A replica coronation anointing spoon, Birmingham 1936 £20-25 |
| 243 | A ladies silver evening bag, Birmingham 1918 £20-25 |
| 244 | A silver brooch set with a single amethyst £20-25 |

| <u>Lot No</u> | <u>Description</u> |
|---------------|--------------------|
|---------------|--------------------|



244

- | | |
|-----|---|
| 245 | A cameo top silver oval pill box, gilt interior, Birmingham 1899, 5.7cm wide £50-80 |
|-----|---|



245

- | | |
|-----|--|
| 246 | A Victorian, silver-mounted, Blue John oval brooch and a matching pair of earrings (3) £80-100 |
|-----|--|



246

- | | |
|-----|---|
| 247 | A cultured pearl, two-strand necklace, with 9ct white gold clasp £75-100 |
| 248 | A large silver and marcasite brooch, in the form of an eagle, 9cm across £30-40 |

| <u>Lot No</u> | <u>Description</u> | <u>Lot No</u> | <u>Description</u> |
|-----------------|---|---------------|---|
| 249 | A mourning brooch, in a navette-shaped gilt metal setting, a string of black beads and a simulated amber brooch (3) £10-20 | 263 | A 9ct gold cigar piercer, engine-engraved, ring suspension, Birmingham 1937 (17gms) £100-150 |
| 250 | A silver and amethyst-set celtic design brooch; a mother-of-pearl and gold-overlaid shell pendant and an enamel and marcasite brooch as a dancing couple (3) £10-20 | 264 | Four 9ct gold prize medallions (21g total), all cased, and assorted collectables including Special Constabulary medal, heraldic crest, watches, commemorative medallions, etc. £160-200 |
| 251 | Four pairs of 14K gold earrings, each with matching pendant and neck chain (1.6grms gross) £50-70 | 265 | A Tissot, white metal, bark-effect bracelet watch £30-50 |
| NO LOTS 252-254 | | 266 | A Tissot, plated, bark-effect bracelet watch £30-40 |
| 255 | A 9ct gold ropetwist brooch and a 9ct gold and garnet-set pin (2) £40-50 | 267 | A Vicence, 9ct gold-cased ladies wrist watch, conforming flexible bracelet (15.8gms gross) £80-120 |
| 256 | A 15ct gold, aquamarine and seed pearl brooch and a 9ct gold, aquamarine and seed pearl brooch (2) £40-60 | 268 | A Tissot, gilt metal, bark-effect bracelet watch £30-50 |
| 257 | A 9ct gold, 'The King Own' sweetheart brooch £60-80 | | |
| 258 | A Victorian, 9ct hollow gold and gem set brooch; a fine 9ct gold neckchain and a pair of gold earrings (3) £40-60 | | |
| 259 | A 9ct gold bracelet with padlock snap (14 grms) £80-120 | | |
| 260 | A 9ct gold-mounted cameo brooch £50-70 | | |
| 261 | A Mexican gold two pesos pendant, in 9ct gold mount with conforming neckchain £60-80 | | |
| 262 | A 9ct gold crucifix and neckchain and a 9K flexible link bracelet (9.4grms total) (2) £60-80 | | |



268

- Lot No Description
269 A Longines, 9ct gold-cased gent's quartz wrist watch, with a 9ct gold bracelet £300-400



269

- 270 A ladies Omega DeVille, stainless steel and gold wrist watch, No 6101/433, with matching bracelet, original box £250-350



270

- 271 A pair of 9ct gold, sapphire and paste diamond drop earrings £20-35
272 A pair of 9ct white and yellow gold, diamond-set ear studs £100-150
273 Two gold bar brooches, set with rubies and turquoise and an opal-set stick pin (3) £50-70

- Lot No Description
274 A 15 ct gold bar brooch, set with demantoid garnets and pearls £40-60

274



- 275 A 15ct gold bar brooch, set with a central aquamarine flanked by seed pearls, and a 15ct brooch, with central lozenge set with a diamond (2) £60-80

- 276 A gold and diamond-set brooch £70-100

- 277 A Victorian, 9ct gold ladies bangle, in a presentation case, Birmingham 1892 (5.6gms) £100-120

- 278 A half sovereign pendant, in 9ct gold mount, with conforming neck chain £100-150

- 279 A 9ct gold charm bracelet, with sixteen charms dependant including two half sovereigns £450-550



279

- 280 Five 9ct gold and gem-set gold rings, various (27.4 grams gross) £200-250

- | <u>Lot No</u> | <u>Description</u> |
|---------------|--|
| 281 | Two 9ct gold wedding bands, different and a 9ct gold and rose diamond-mounted eternity ring (3) £60-80 |
| 282 | An 18ct (tested) gold ring, with 14 points of diamond (size L ½) £100-120 |
| 283 | A 22ct gold and gem-set gypsy ring (size U ½) £60-80 |
| 284 | A 9ct gold, blue topaz and diamond dress ring (size R ½) £25-35 |



284

- | | |
|-----|---|
| 285 | An 18ct gold, diamond and sapphire multi stone ring (size M) £50-80 |
| 286 | A 9ct gold, diamond and sapphire floret ring (size K) £50-80 |
| 287 | A 9ct gold and citrine ring (size I) £40-60 |
| 288 | An 18ct gold, diamond and sapphire floret ring (size N) £60-80 |



288

- | | |
|-----|--|
| 289 | A 9ct white gold and diamond solitaire ring (size O) £70-100 |
|-----|--|

- | <u>Lot No</u> | <u>Description</u> |
|---------------|---|
| 290 | A white gold and diamond full eternity ring (size P) £200-300 |
| 291 | An 18ct gold and five stone diamond ring (size M) £100-125 |
| 292 | An 18ct gold and five stone diamond ring (size M) £40-60 |
| 293 | An 18ct gold and five stone diamond ring (size M ½) £250-350 |



293

Scale Models, Vintage Toys & Textiles

- | | |
|-----|--|
| 294 | A German bisque head child doll, blonde hair, blue fixed eyes, pierced ears, composition body, 36cm high, with period chemise and petticoat £50-70 |
| 295 | An early Scaletrix model motor racing set, in original box and a Trix transformer £30-50 |
| 296 | A Jacques and Son mah-jongg set, in wooden case £20-30 |
| 297 | Assorted diecast toys, including Lesney Matchbox, Crane Truck Magirus Deutz £30-50 |

NO LOT 298

- | | |
|-----|--|
| 299 | Sixteen pairs of ladies gloves, including many kid leather examples; two evening bags; five various fur hats and a mink stole £40-50 |
|-----|--|

- | <u>Lot No</u> | <u>Description</u> |
|---------------|---|
| 300 | Four evening bags, hat pin holders, figure, and scent bottle £15-20 |
| 301 | A selection of Victorian textiles, comprising an 1870 sampler, unframed; two jet bead-decorated waist bands; a child's needlework-decorated apron; a woolwork-decorated cushion panel; an anti macassar; a crochet work and lace mourning table cloth and a pair of glove stretchers (8) £60-80 |
| 302 | Four lengths of Japanese kimono jacquarded silk £60-80 |
| | <i>Note: purchased Shimoda, 1977</i> |
| 303 | A model of a Viking longboat, 87cm long £30-50 |
| 304 | A Billing boats, kit-built model of a Spanish galleon, 71cm long £40-70 |
| 305 | A Billing boats, kit-built model of the training ship, Danmark, 104cm long £60-100 |
| 306 | A model of HMS Supply, one of the first ships of the first fleet to sail to Australia under Captain Arthur Philips, 1787-1788, 75% scratch built to scale 1:60, on a carrying cradle, with provenance £500-1000 |



306

- | <u>Lot No</u> | <u>Description</u> |
|---------------|---|
| 307 | A model of the Spanish bomb ketch Celestina 1783, scratch built to scale 1:65, ballasted and fit to sail, on a carrying cradle, with provenance £500-1000 |



307

- | | |
|-----|--|
| 308 | A superbly detailed model of HMS Victory, Admiral Lord Nelson's flagship at the battle of Trafalgar, 1805, 70% scratch built to scale 1:98, and copper-bottomed using over 1300 individual copper plates, 105cm long, 75cm high on a carrying cradle, with provenance £1000-1500 |
|-----|--|



308

- | | |
|-----|---|
| 309 | Six dioramas, including 24 pdr. cannons, on HMS Victory gun deck, 18 pdr. cannons on HMS Victory gun deck, two long boats, Roman Soldiers, Light Brigade, British Grenadiers 1700 and a model French field cannon (7) £50-100 |
|-----|---|

- | <u>Lot No</u> | <u>Description</u> |
|---------------|--|
| 310 | An original pintle, recovered from the wreck of The Crusader, grounded in 1839 on North Bank opposite the Starr Hills, Blackpool, in a display case £30-50 |

- | <u>Lot No</u> | <u>Description</u> |
|---------------|--|
| 317 | National Sunday League interest: Henry Mills Esq J P., Secretary of the National Sunday League, a collection of memorabilia comprising testimonial, dated 1909; a framed, highlighted photograph and a bound single volume testimonial dated 1918, presented by various London Theatres and cinemas £200-500 |

Books, Pictures & Prints

- | | |
|-----|---|
| 311 | Twelve books relating to sail rigging, model ship building, Titanic, tea clippers and general maritime related £40-60 |
|-----|---|

- | | |
|-----|---|
| 312 | A selection of drawings, menus, notes and DVDs relating to model ship building; four flags, including a Union Jack and a cross of St George, both on stands; two table display cloths and five pictures, including HMS Victory, motor torpedo gun boat, MGB662 crew photo etc. £50-80 |
|-----|---|

- | | |
|-----|---|
| 313 | Miles (W.J): Practical Farriery, illus., pub. William Mackenzie, London, Edinburgh and Glasgow, circa 1880 and three other volumes on farriery (4) £50-80 |
|-----|---|

- | | |
|-----|--|
| 314 | The Hackney Stud Book, vols XIII-XVII, 1896-1900, gilt cloth (5) £70-100 |
|-----|--|

- | | |
|-----|--|
| 315 | Shire Horse Society Stud Book, 40th-43rd vols., 1919-1923, gilt cloth (5) £50-80 |
|-----|--|

- | | |
|-----|---|
| 316 | A small leather-bound autograph album containing early 20 th century prose and drawings £30-50 |
|-----|---|

317



- | | |
|-----|---|
| 318 | A Victorian large needlework sampler by Ann Ainsworth, 1863, centrally with a church surrounded by cherubs, pots of flowers etc., within a floral border, 67cm by 77.5cm £30-50 |
|-----|---|

- | | |
|-----|---|
| 319 | Masonic interest: A Biographical sketch of His Late Royal Highness, The Duke of Sussex, Etc., Etc.,' comprising an early Victorian portrait, composed of a continuous line of microscopic text, 72cm by 52.5cm, gilt slip, oak-grained frame £200-300 |
|-----|---|

- | | |
|-----|---|
| 320 | After E.P. Kinsella, Out First Ball, reproduction printed in colours, 31cm by 21cm and another, The Hope of His Side (2) £30-50 |
|-----|---|

- | | |
|-----|--|
| 321 | After Helen Bradley, Spring, reproduction printed in colours, signed in pencil and bearing Artists' Trade Guild blindstamp, 25cm by 32cm, and three others, Summer, Autumn and Winter (a set of four) £40-60 |
|-----|--|

- | <u>Lot No</u> | <u>Description</u> |
|---------------|---|
| 322 | After Arthur Delaney, Manchester Street with Trams, limited edition reproduction printed in colours, signed in pencil, numbered 198/435 and with publisher's blindstamp, 34cm by 29cm £40-60 |
| 323 | After Sir William Russell-Flint, Study of a Reclining Woman, limited edition reproduction printed in colours, No 370/850 and bearing Michael Stuart Fine Art blindstamp, 26.5cm by 38cm £20-35 |
| 324 | After Steven Townsend, portrait of a Golden Retriever in a Landscape, limited edition reproduction printed in colours, signed in pencil, numbered 115/600 and bearing Northern Editions blindstamp, 44cm by 57.5cm £30-50 |
| 325 | After Hedley Fitton, A Venetian Scene, signed in pencil, etching, 43cm by 53.5cm £70-100 |

325



- | | |
|-----|---|
| 326 | Thomas Hartley Cromek, Superior of the Convent of S. Elias, inscribed and dated 12 July 1834, pencil, 16cm by 12.5cm £40-60 |
| 327 | David Cox, Windsor Castle, brown wash, 14.5cm by 26.5cm £150-200 |

- | <u>Lot No</u> | <u>Description</u> |
|---------------|--|
| 328 | J.E.M. Bastian, Study of a Soldier, signed and partly dated, pencil on blue paper, 38.2cm by 28cm and another, similar study (2) £50-70 |
| 329 | Manner of P. Hobbs, Cartoon Study of A. Fairfax, Australian cricketer, pen and ink, bears signature, 25cm by 14cm and seven others, similar (8) £60-80 |
| 330 | Manner of Vanessa Bell, Nude Study, bears signature and date, pen and ink, 29.7cm by 15.3cm £30-50 |
| 331 | Manner of Laura Knight, Study of a Clown, bears signature and inscription, pen and ink and watercolour, 30cm by 17.5cm £70-100 |



331

- | | |
|-----|---|
| 332 | Jean Daumier, A Paris Street Scene, with the Arc de Triomph in the background, signed, oil on canvas, 49cm by 59cm £50-100 |
| 333 | (?) Rae, A Dutch Winter Scene, with skaters near a castle, signed verso, watercolour and scratching out, 8.2cm by 12.7cm £40-60 |

- Lot No Description
- 334 George S. Elgood, Near Sienna, signed, inscribed and dated 1914, watercolour, 12.6cm by 32cm £150-200

334



- 335 E. Beattie, Preston Market Place, 1860, signed, inscribed and dated, watercolour, 23.5cm by 36.5cm £70-100
- 336 Noel H. Leaver, ARCA, A Middle Eastern Street Scene, with figures around a gateway, signed, watercolour, 36cm by 26cm £300-400
- 337 Ron Hulse, Near Downham, Lancs., signed and dated (19)72, oil on panel, 24.2cm by 34.8cm £25-35
- 338 Continental School, early 20th century, A Woman with Baby, beneath a tree, oil on panel, 21cm by 30cm £80-120
- 339 Manner of L.S. Lowry, Industrial Townscape with Figures, bears signature and with further pen and ink study verso, oil on board, 39.5cm by 49cm £400-450

339



- Lot No Description
- 340 Maria Gianni, Lake Como, signed, watercolour, 18.5cm by 41.5cm £70-100
- 341 Maria Gianni, Lake Garda, signed, watercolour, 18.2cm by 41.2cm £70-100
- 342 Y. Gianni, Via San Roma, Napoli, signed, watercolour, 41cm by 18.2cm and another, a pair, Bay of Naples (2) £150-200

Furniture & Interior Decoration

- 343 A pair of Chinese cast metal Fo dogs seated on plinths, 69cm high £1000-2000



343

- 344 An oak and glazed slope top display case, on square taper legs, early 20th century, 167cm wide £150-250
- 345 A Victorian mahogany polescreen, the rectangular banner with later embroidered panel, on three splayed cabriole legs, pad feet, 172cm high overall £60-80
- 346 A Victorian mahogany dressing table mirror, turned side pillars, moulded rectangular base, 61cm wide £40-60
- 347 An Edwardian inlaid walnut corner table, with undershelf, 62cm wide £40-50

- Lot No Description
348 A Victorian child's high chair,
converting to a baby walker
£100-150



348

- 349 An early Victorian, oak, oval back,
solid seat hall chair £30-40
350 A child's ash and elm Windsor chair,
with crinoline stretcher £40-60
351 A sparred oak window seat, on
splayed legs, early 20th century, 59cm
wide £30-50
352 An Edwardian rosewood and inlaid
envelope top card table, on square
tapering legs with undershelf, 55.5cm
wide £250-350



352

- Lot No Description
353 A Victorian, inlaid walnut, four-tier
whatnot, the graduated, semi-circular
shelves interspaced by turned pillars,
134cm high £40-60
354 A George V, 1911 coronation,
commemorative oak lambing style
chair, with carved panels, winged
sides and single drawer beneath the
seat, 69cm wide £200-300



354

- 355 A carved oak eight-piece dining room
suite, comprising extending table, four
chairs, two-tier tea trolley, display
cabinet and circular occasional table,
1930s (8) £100-150
356 A Victorian, pine, draw leaf table on
turned legs, 187.5cm wide, open
£100-130
357 A set of four ecclesiastical-style beech
and elm stand chairs £50-70
358 A set of eight rush seat Chipping
chairs, including two carvers
£100-150

- Lot No Description
- 359 A pair of Victorian, carved and stained oak occasional chairs
£120-150
- 
- 359
- 360 A Victorian, oak, rush-seated armchair £40-50
- 361 An Edwardian, mahogany and boxwood-lined, spar back open armchair, the padded seat with close-nailed border £20-35
- 362 A gentleman's oak armchair, marquetry-inlaid to the side rails, with solid seat and splat, turned legs and cross stretchers £70-100
- 363 A French-style upholstered gentleman's armchair, with a carved wood show frame £70-100
- 364 A George III ship captain's wing back armchair, of generous proportions (significantly later-altered and re-upholstered) £500-600

Lot No Description



364

- 365 An oak refectory table to seat ten, the rectangular top with moulded edge, on four heavy turned legs, joined by an 'H' stretcher, 245cm by 90cm £250-350
- 366 A matched set of eight Lancashire ladderback rush seat dining chairs, including two carvers £150-200
- 367 An oak dresser, with a two plank moulded edge top, above three frieze drawers with later handles, above an open pot board base, early 18th century 157cm by 45cm £700-900

367



NO LOTS 368-369

| <u>Lot No</u> | <u>Description</u> | <u>Lot No</u> | <u>Description</u> |
|---------------|---|---------------|--------------------|
| 370 | A Victorian stripped pine chest, with serpentine top, 93cm wide £150-200 | | |
| 371 | A late Victorian, mahogany, cabinet bookcase, the upper section of two astragal doors, the lower section with hinged fall and leather sciver enclosing a shelf above two doors, 122cm wide £250-350 | | |
| 372 | A Priory oak, small, reproduction fall front bureau, 76cm wide £40-60 | | |